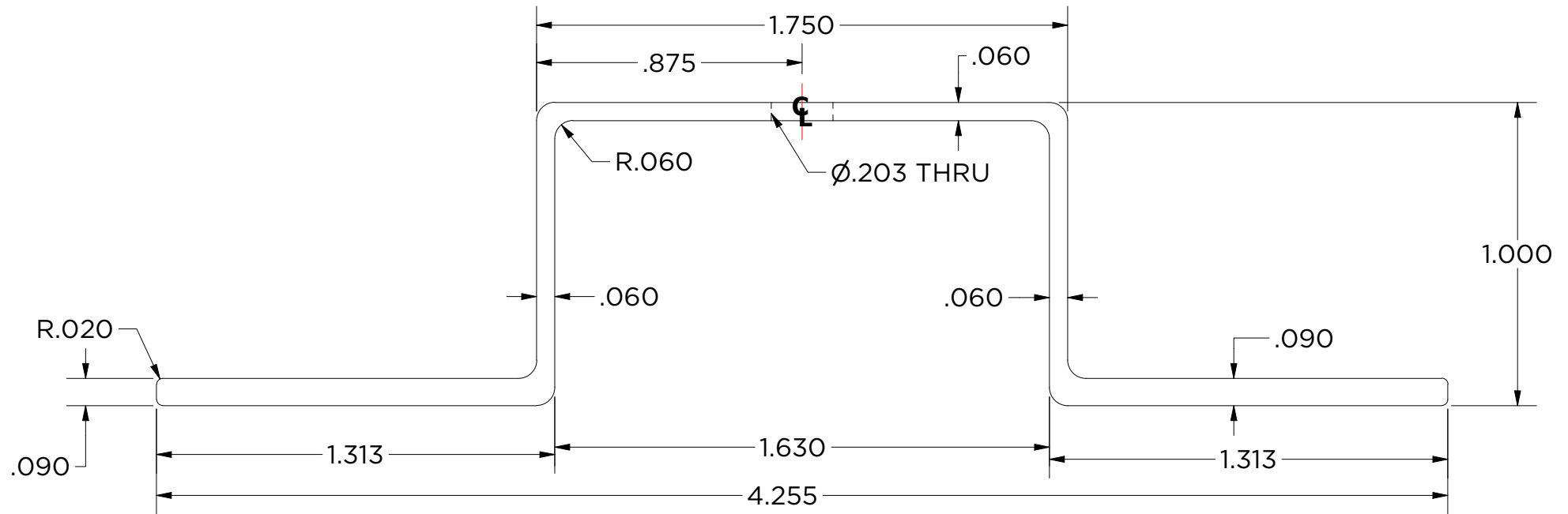


Monarch MHATLW-BP

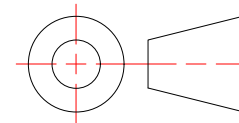
6063-T6

120" Lengths

Finish:
Black Powdercoat



Created By: Aaron Hawkins	Approved By:	Sheet Size A	Sheet No. 1/3
Creation Date: 2/3/2022	Approval Date: 3/8/2022	Scale 2 : 1	Rev 2



MHATLW
Lightweight Hat Channel

Aluminum 6063
Finish: Black Powdercoat



MONARCH
METAL INC.

PROPRIETARY AND CONFIDENTIAL

THE INFORMATION CONTAINED IN THIS DRAWING IS THE SOLE PROPERTY OF MONARCH METAL FABRICATION. ANY REPRODUCTION IN PART OR AS A WHOLE WITHOUT THE WRITTEN PERMISSION OF MONARCH METAL INC. IS PROHIBITED.

New York
1700 Ocean Ave Suite 2
Ronkonkoma NY 11779
Phone: (631) 750-3000

Nevada
1080 Linda Way, Unit 10
Sparks, NV 89431
Phone: (775) 415-0100

Texas
1330 Post & Paddock St.,
Suite 800
Grand Prairie, TX 75050
(945) 202-2700

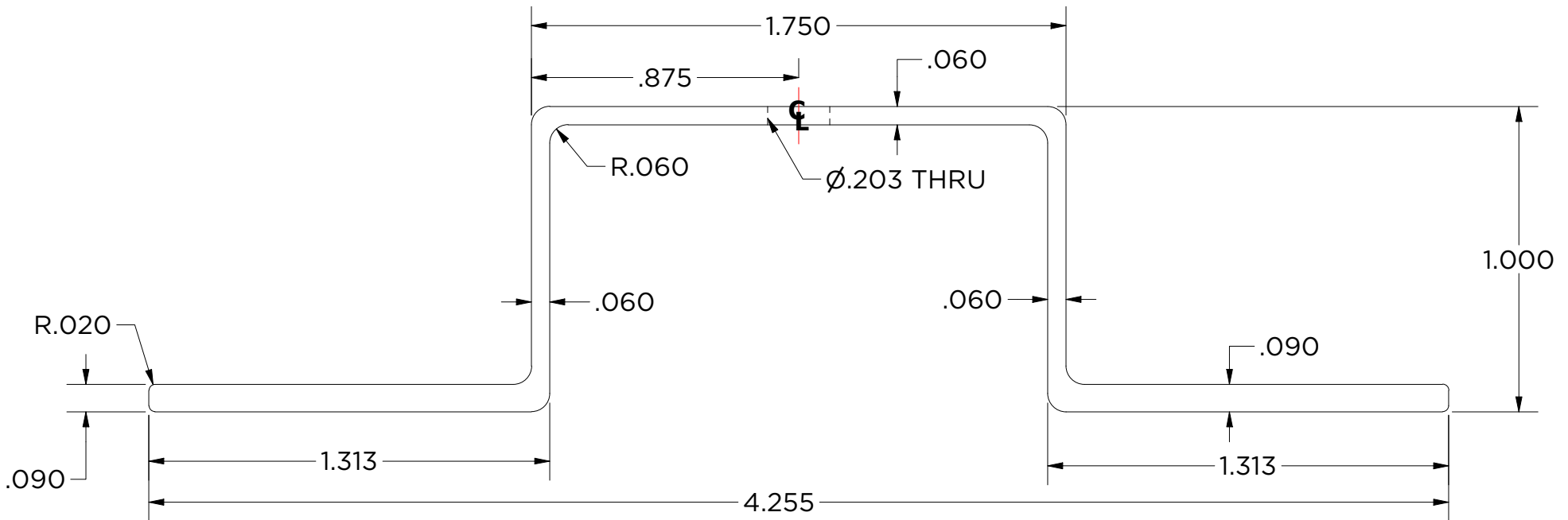
monarchmetal.com

Monarch MHATLW-M

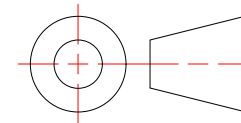
6063-T6

120" Lengths

Finish:
Mill



Created By: Aaron Hawkins	Approved By:	Sheet Size A	Sheet No. 2/3
Creation Date: 2/3/2022	Approval Date: 3/8/2022	Scale 2 : 1	Rev 2



MHATLW
Lightweight Hat Channel

Aluminum 6063
Finish: Mill Finish



MONARCH
METAL INC.

PROPRIETARY AND CONFIDENTIAL

THE INFORMATION CONTAINED IN THIS DRAWING IS THE SOLE PROPERTY OF MONARCH METAL FABRICATION. ANY REPRODUCTION IN PART OR AS A WHOLE WITHOUT THE WRITTEN PERMISSION OF MONARCH METAL INC. IS PROHIBITED.

New York
1700 Ocean Ave Suite 2
Ronkonkoma NY 11779
Phone: (631) 750-3000

Nevada
1080 Linda Way, Unit 10
Sparks, NV 89431
Phone: (775) 415-0100

Texas
1330 Post & Paddock St.,
Suite 800
Grand Prairie, TX 75050
(945) 202-2700

monarchmetal.com

MHATLW - Fabrication

Applies to Black Powdercoat and Mill Finish Parts

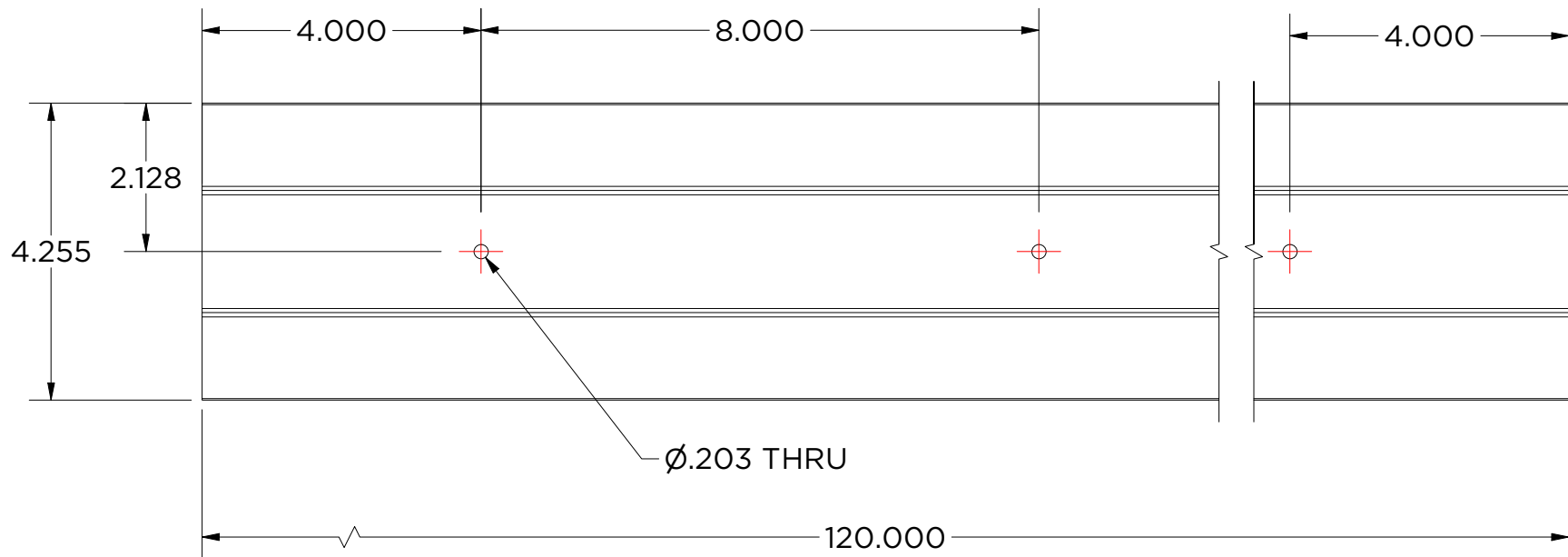
.203" Thru-Holes

4" Lead-In

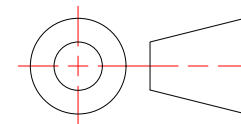
8" On-Center Spacing

(15) Total Holes Per Piece

Top View



Created By: Aaron Hawkins	Approved By:	Sheet Size A	Sheet No. 3/3
Creation Date: 2/3/2022	Approval Date: 3/8/2022	Scale 1:2.5	Rev 2



MHATLW
Lightweight Hat Channel

Aluminum 6063
Finish: Black Powdercoat



MONARCH
METAL INC.

PROPRIETARY AND CONFIDENTIAL

THE INFORMATION CONTAINED IN THIS DRAWING IS THE SOLE PROPERTY OF MONARCH METAL FABRICATION. ANY REPRODUCTION IN PART OR AS A WHOLE WITHOUT THE WRITTEN PERMISSION OF MONARCH METAL INC. IS PROHIBITED.

New York 1700 Ocean Ave Suite 2 Ronkonkoma NY 11779 Phone: (631) 750-3000	Nevada 1080 Linda Way, Unit 10 Sparks, NV 89431 Phone: (775) 415-0100	Texas 1330 Post & Paddock St., Suite 800 Grand Prairie, TX 75050 (945) 202-2700
-------------------------------------------------------------------------------------------	---------------------------------------------------------------------------------------	----------------------------------------------------------------------------------------------------

monarchmetal.com