


NO.	DESCRIPTION
1	PANEL (BY OTHERS)
2	HAT CHANNEL
3	PANEL FASTENER
4	SYSTEM CLOSURE
5	WEATHER BARRIER (BY OTHERS)
6	ANCHORING FASTENER
7	SHEATHING (BY OTHERS)
--	--
--	--
--	--
--	--
--	--
--	--
--	--
--	--
--	--
--	--

SHIMMING SHALL BE IN ACCORDANCE WITH GENERALLY ACCEPTED CURTAIN WALL STANDARDS 1/4" : 20'

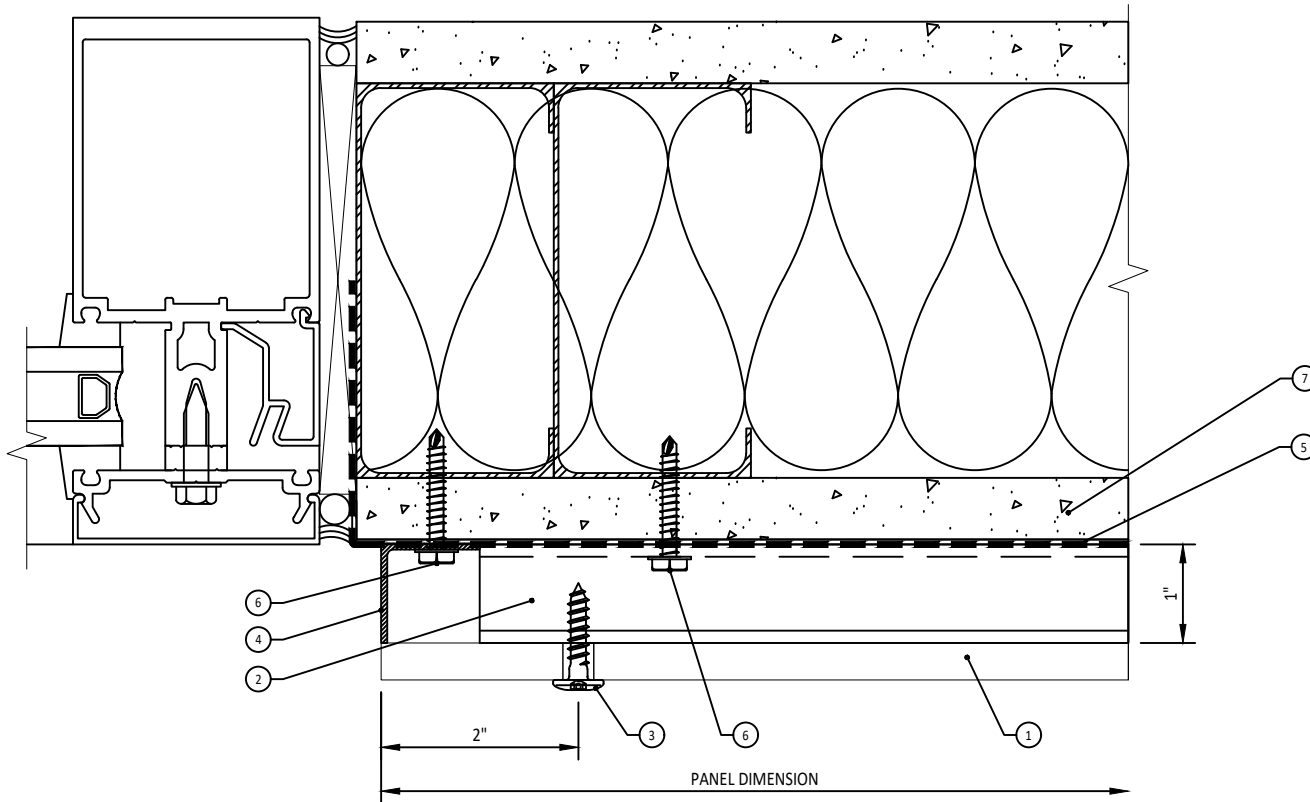
PROPRIETARY AND CONFIDENTIAL

THE INFORMATION CONTAINED IN THIS DRAWING IS THE SOLE PROPERTY OF MONARCH METAL FABRICATION. ANY REPRODUCTION IN PART OR AS A WHOLE WITHOUT THE WRITTEN PERMISSION OF MONARCH METAL FABRICATION IS PROHIBITED.

MAT'L	ALUMINUM
GAUGE	--
FINISH	--

	NAME	DATE
DRAWN	KP	10/12/20
CHECKED	BB	---
		

TITLE:			HPL HORIZONTAL EXPOSED DETAILS W/O THERMAL ISOLATION		
SIZE	DWG. NO.	DOOR JAMB		REV.	--
A4					
SCALE:	1:2	WEIGHT: ≈	-- LBS	SHEET: 1 OF 13	




NO.	DESCRIPTION
1	PANEL (BY OTHERS)
2	HAT CHANNEL
3	PANEL FASTENER
4	SYSTEM CLOSURE
5	WEATHER BARRIER (BY OTHERS)
6	ANCHORING FASTENER
7	SHEATHING (BY OTHERS)
--	--
--	--
--	--
--	--
--	--
--	--
--	--
--	--
--	--
--	--

SHIMMING SHALL BE IN ACCORDANCE WITH GENERALLY ACCEPTED CURTAIN WALL STANDARDS 1/4" : 20'

PROPRIETARY AND CONFIDENTIAL

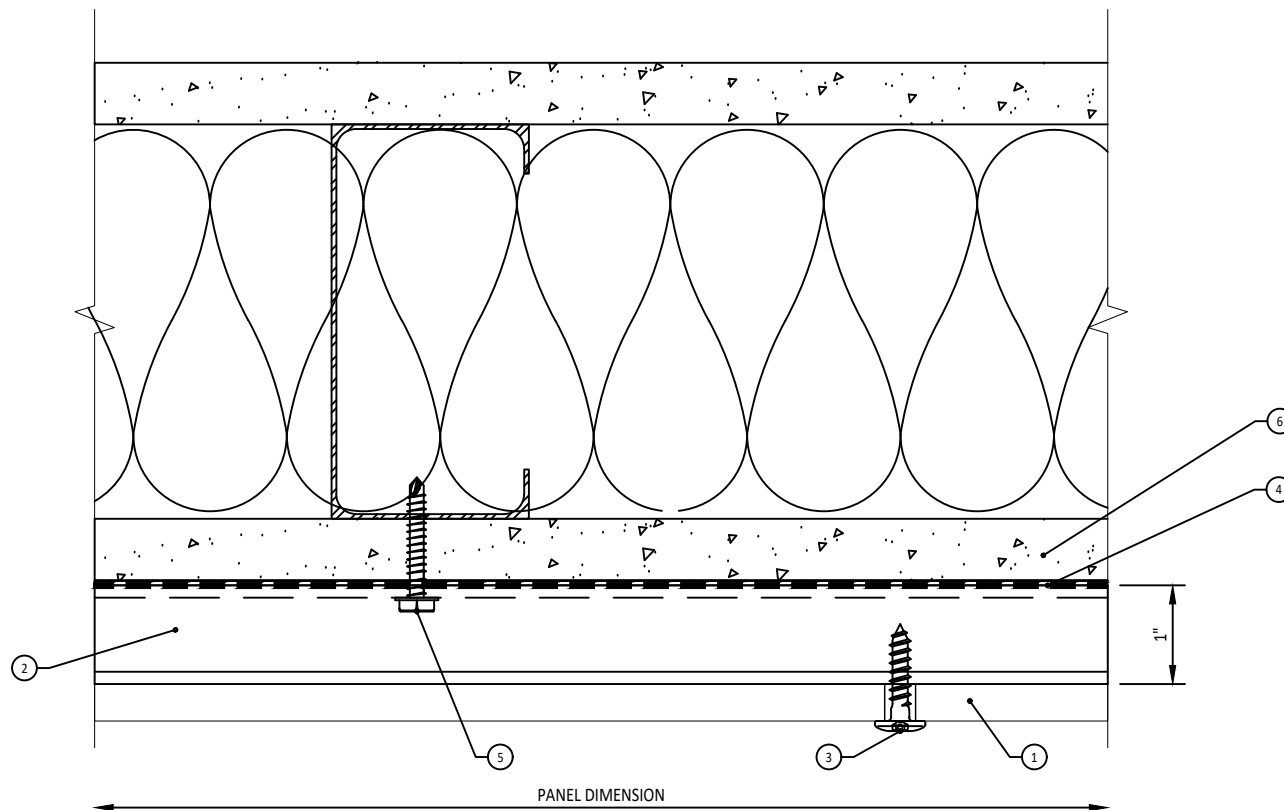
THE INFORMATION CONTAINED IN THIS DRAWING IS THE SOLE PROPERTY OF MONARCH METAL FABRICATION. ANY REPRODUCTION IN PART OR AS A WHOLE WITHOUT THE WRITTEN PERMISSION OF MONARCH METAL FABRICATION IS PROHIBITED.

MAT'L	ALUMINUM
GAUGE	--
FINISH	--

	NAME	DATE
DRAWN	KP	10/12/20
CHECKED	BB	---
		

TITLE:			HPL HORIZONTAL EXPOSED DETAILS W/O THERMAL ISOLATION		
SIZE	DWG. NO.	REV.			
A4	WINDOW JAMB	--			
SCALE:	1:2	WEIGHT: ≈	-- LBS	SHEET: 2 OF 13	

NO.	DESCRIPTION
1	PANEL (BY OTHERS)
2	HAT CHANNEL
3	PANEL FASTENER
4	WEATHER BARRIER (BY OTHERS)
5	ANCHORING FASTENER
6	SHEATHING (BY OTHERS)
--	--
--	--
--	--
--	--
--	--
--	--
--	--
--	--
--	--
--	--
--	--
--	--
--	--
--	--
--	--
--	--



SHIMMING SHALL BE IN ACCORDANCE WITH GENERALLY  
ACCEPTED CURTAIN WALL STANDARDS 1/4" : 20'

PROPRIETARY AND CONFIDENTIAL

THE INFORMATION CONTAINED IN THIS DRAWING IS  
THE SOLE PROPERTY OF MONARCH METAL  
FABRICATION. ANY REPRODUCTION IN PART OR AS A  
WHOLE WITHOUT THE WRITTEN PERMISSION OF  
MONARCH METAL FABRICATION IS PROHIBITED.

MAT'L  
**ALUMINUM**

GAUGE --

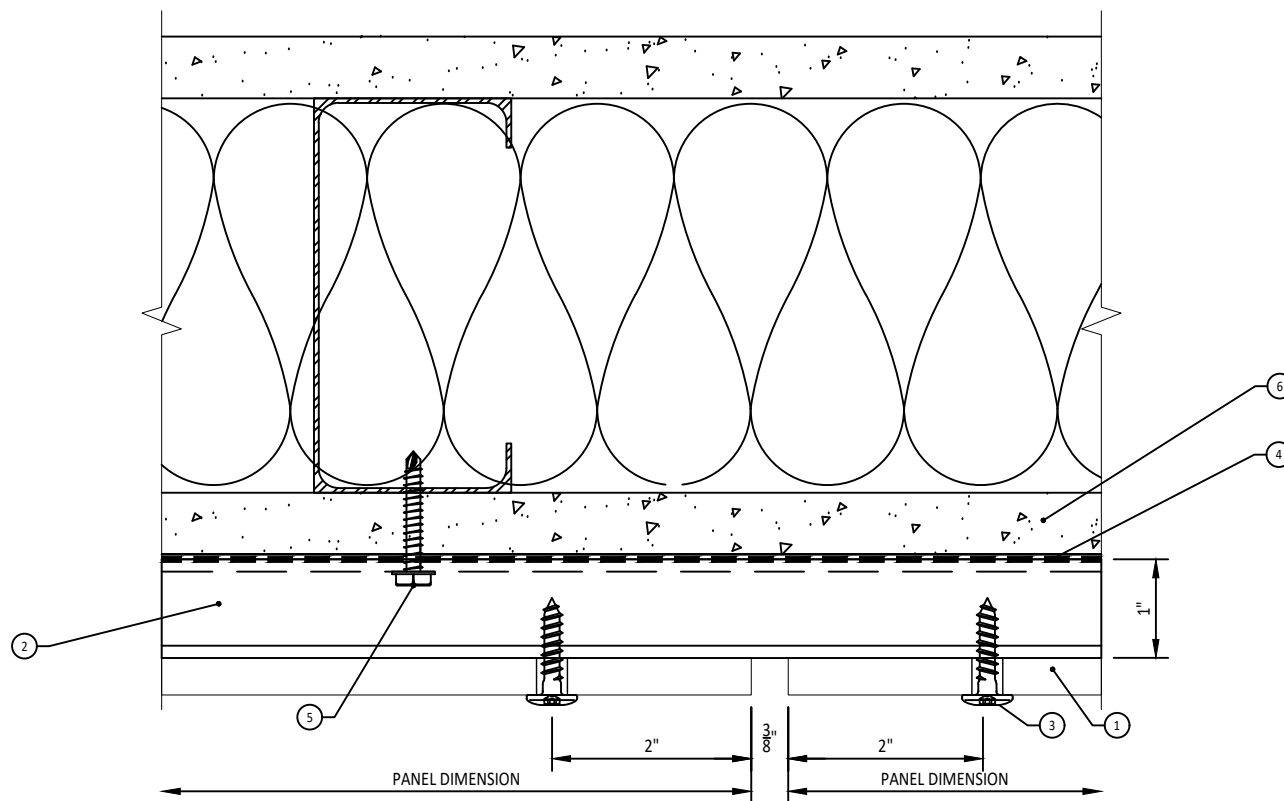
FINISH --

	NAME	DATE
DRAWN	KP	10/12/20
CHECKED	BB	---

**MONARCH**  
METAL FABRICATION

TITLE: <b>HPL HORIZONTAL EXPOSED DETAILS W/O THERMAL ISOLATION</b>		
SIZE <b>A4</b>	DWG. NO. <b>MID PANEL</b>	REV. <b>--</b>
SCALE: <b>1:2</b>	WEIGHT: ≈ <b>-- LBS</b>	SHEET: <b>3 OF 13</b>

NO.	DESCRIPTION
1	PANEL (BY OTHERS)
2	HAT CHANNEL
3	PANEL FASTENER
4	WEATHER BARRIER (BY OTHERS)
5	ANCHORING FASTENER
6	SHEATHING (BY OTHERS)
--	--
--	--
--	--
--	--
--	--
--	--
--	--
--	--
--	--
--	--
--	--
--	--
--	--



SHIMMING SHALL BE IN ACCORDANCE WITH GENERALLY  
ACCEPTED CURTAIN WALL STANDARDS 1/4" : 20'

PROPRIETARY AND CONFIDENTIAL

THE INFORMATION CONTAINED IN THIS DRAWING IS  
THE SOLE PROPERTY OF MONARCH METAL  
FABRICATION. ANY REPRODUCTION IN PART OR AS A  
WHOLE WITHOUT THE WRITTEN PERMISSION OF  
MONARCH METAL FABRICATION IS PROHIBITED.

MAT'L ALUMINUM

GAUGE --

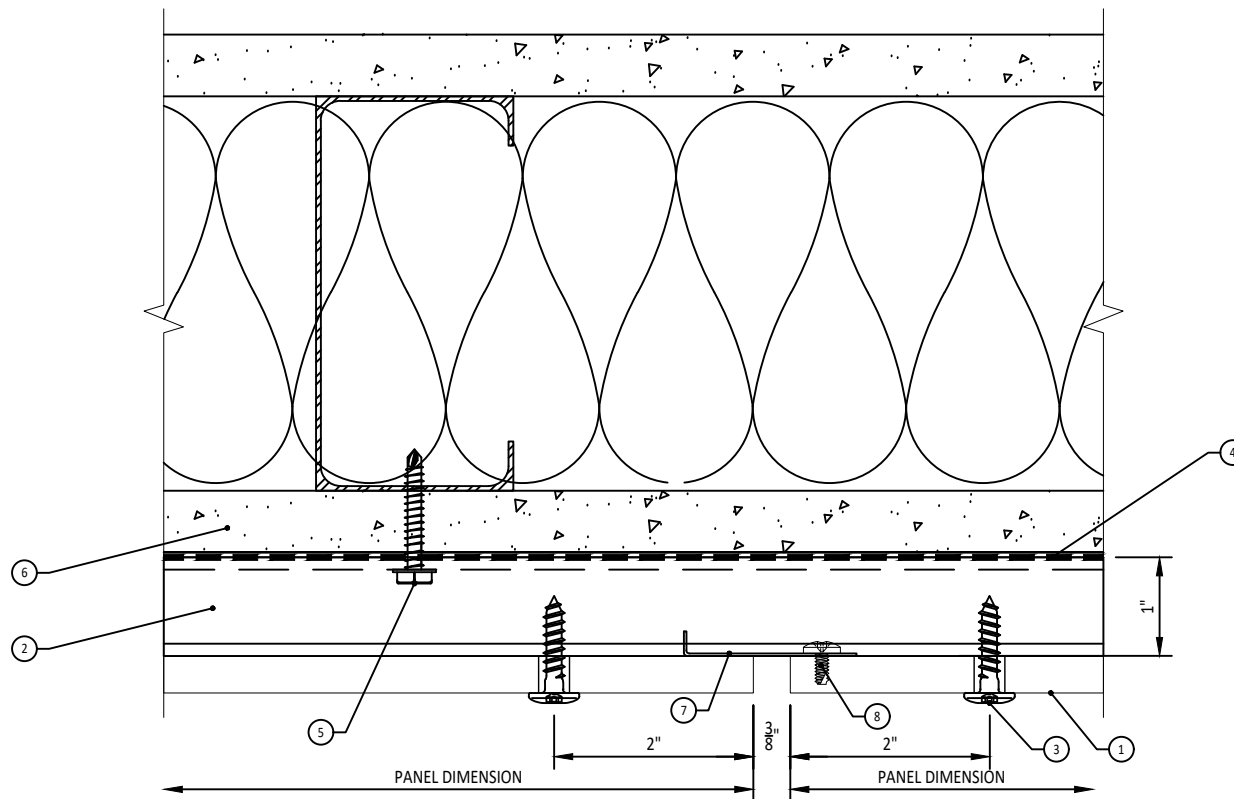
FINISH --

	NAME	DATE
DRAWN	KP	10/12/20
CHECKED	BB	---

**MONARCH**  
METAL FABRICATION

TITLE: <b>HPL HORIZONTAL EXPOSED DETAILS W/O THERMAL ISOLATION</b>		
SIZE <b>A4</b>	DWG. NO. <b>VERT PANEL JOINT</b>	REV. <b>--</b>
SCALE: <b>1:2</b>	WEIGHT: ≈ <b>-- LBS</b>	SHEET: <b>4 OF 13</b>

NO.	DESCRIPTION
1	PANEL (BY OTHERS)
2	HAT CHANNEL
3	PANEL FASTENER
4	WEATHER BARRIER (BY OTHERS)
5	ANCHORING FASTENER
6	SHEATHING (BY OTHERS)
7	CLIP ANCHOR
8	JOINT CLOSURE
--	--
--	--
--	--
--	--
--	--
--	--
--	--
--	--
--	--
--	--



SHIMMING SHALL BE IN ACCORDANCE WITH GENERALLY  
ACCEPTED CURTAIN WALL STANDARDS 1/4" : 20'

PROPRIETARY AND CONFIDENTIAL

THE INFORMATION CONTAINED IN THIS DRAWING IS  
THE SOLE PROPERTY OF MONARCH METAL  
FABRICATION. ANY REPRODUCTION IN PART OR AS A  
WHOLE WITHOUT THE WRITTEN PERMISSION OF  
MONARCH METAL FABRICATION IS PROHIBITED.

MAT'L ALUMINUM

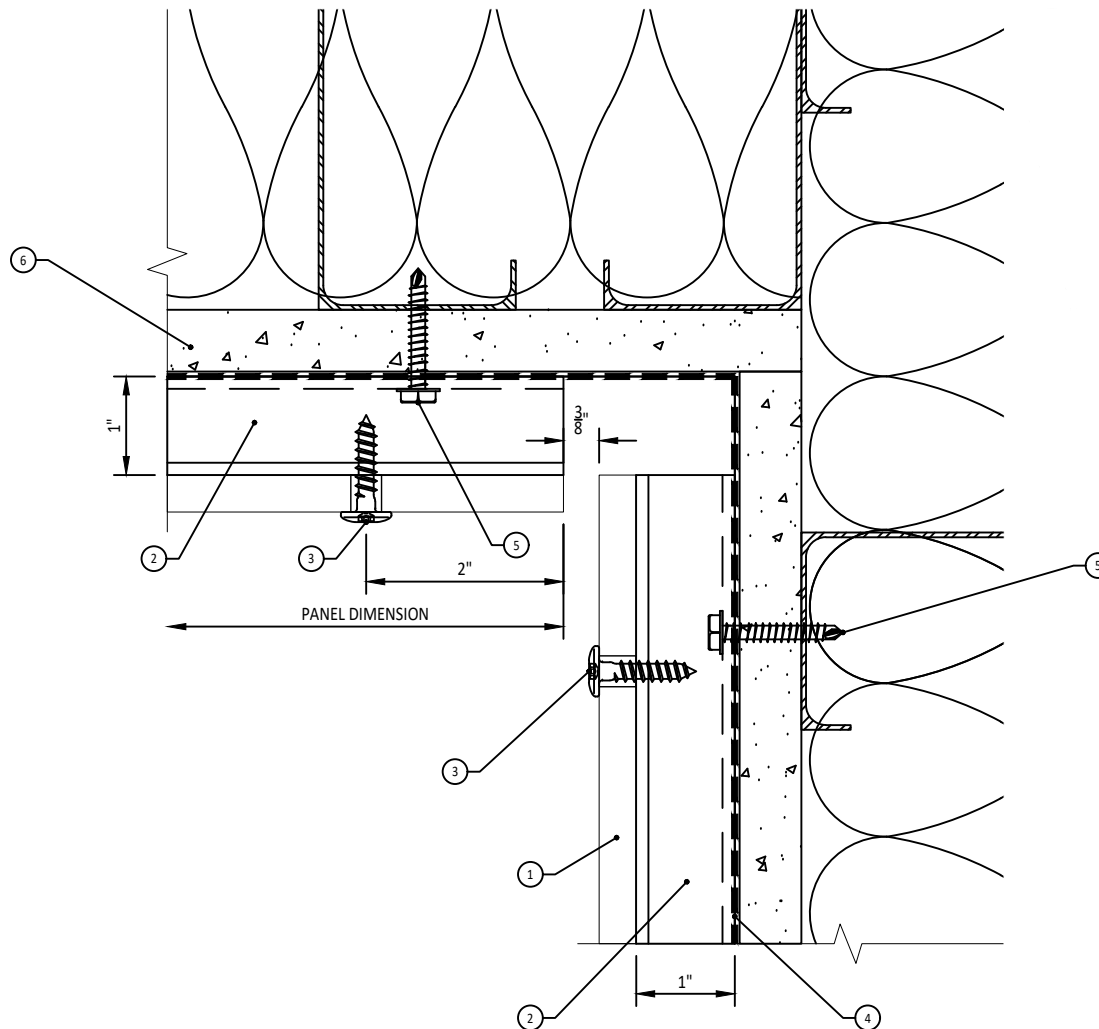
GAUGE --

FINISH --

	NAME	DATE
DRAWN	KP	10/12/20
CHECKED	BB	---

**MONARCH**  
METAL FABRICATION

TITLE: HPL HORIZONTAL EXPOSED DETAILS W/O THERMAL ISOLATION		
SIZE A4	DWG. NO. VERT PANEL JOINT	REV. --
SCALE: 1:2	WEIGHT: ≈ -- LBS	SHEET: 4a OF 13




NO.	DESCRIPTION
1	PANEL (BY OTHERS)
2	HAT CHANNEL
3	PANEL FASTENER
4	WEATHER BARRIER (BY OTHERS)
5	ANCHORING FASTENER
6	SHEATHING (BY OTHERS)
--	--
--	--
--	--
--	--
--	--
--	--
--	--
--	--
--	--
--	--
--	--
--	--

SHIMMING SHALL BE IN ACCORDANCE WITH GENERALLY  
ACCEPTED CURTAIN WALL STANDARDS 1/4" : 20'

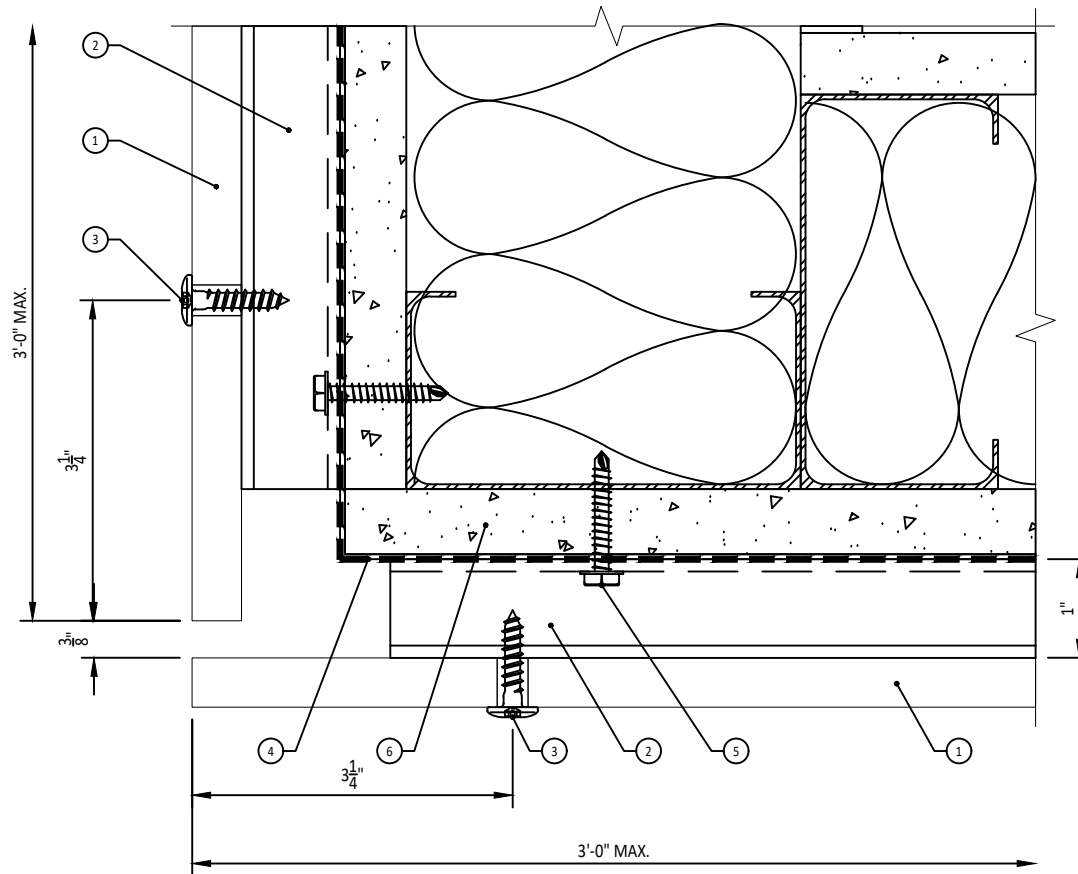
PROPRIETARY AND CONFIDENTIAL

THE INFORMATION CONTAINED IN THIS DRAWING IS  
THE SOLE PROPERTY OF MONARCH METAL  
FABRICATION. ANY REPRODUCTION IN PART OR AS A  
WHOLE WITHOUT THE WRITTEN PERMISSION OF  
MONARCH METAL FABRICATION IS PROHIBITED.

MAT'L	ALUMINUM
GAUGE	--
FINISH	--

	NAME	DATE
DRAWN	KP	10/12/20
CHECKED	BB	--
		

TITLE:			HPL HORIZONTAL EXPOSED DETAILS W/O THERMAL ISOLATION		
SIZE	DWG. NO.	REV.			
A4	INSIDE CORNER	--			
SCALE:	1:2	WEIGHT: ≈	-- LBS	SHEET: 5 OF 13	




NO.	DESCRIPTION
1	PANEL (BY OTHERS)
2	HAT CHANNEL
3	PANEL FASTENER
4	WEATHER BARRIER (BY OTHERS)
5	ANCHORING FASTENER
6	SHEATHING (BY OTHERS)
--	--
--	--
--	--
--	--
--	--
--	--
--	--
--	--
--	--
--	--
--	--

SHIMMING SHALL BE IN ACCORDANCE WITH GENERALLY  
ACCEPTED CURTAIN WALL STANDARDS 1/4" : 20'

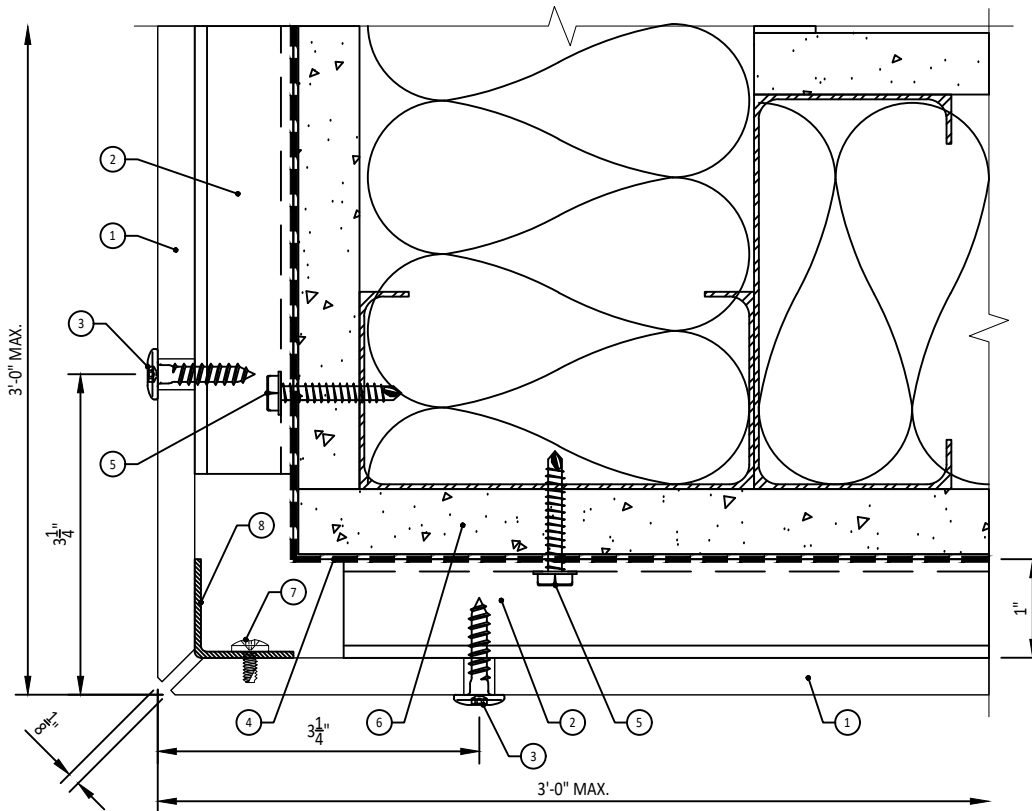
PROPRIETARY AND CONFIDENTIAL

THE INFORMATION CONTAINED IN THIS DRAWING IS  
THE SOLE PROPERTY OF MONARCH METAL  
FABRICATION. ANY REPRODUCTION IN PART OR AS A  
WHOLE WITHOUT THE WRITTEN PERMISSION OF  
MONARCH METAL FABRICATION IS PROHIBITED.

MAT'L	ALUMINUM
GAUGE	--
FINISH	--

	NAME	DATE
DRAWN	KP	10/12/20
CHECKED	BB	---
		

TITLE:			HPL HORIZONTAL EXPOSED DETAILS W/O THERMAL ISOLATION	
SIZE	DWG. NO.	REV.		
A4	OUTSIDE CORNER	--		
SCALE:	1:2	WEIGHT: ≈	-- LBS	SHEET: 6 OF 13




NO.	DESCRIPTION
1	PANEL (BY OTHERS)
2	HAT CHANNEL
3	PANEL FASTENER
4	WEATHER BARRIER (BY OTHERS)
5	ANCHORING FASTENER
6	SHEATHING (BY OTHERS)
7	CORNER ANCHOR
8	CORNER CLOSE
--	--
--	--
--	--
--	--
--	--
--	--
--	--
--	--
--	--

SHIMMING SHALL BE IN ACCORDANCE WITH GENERALLY  
ACCEPTED CURTAIN WALL STANDARDS 1/4" : 20'

PROPRIETARY AND CONFIDENTIAL

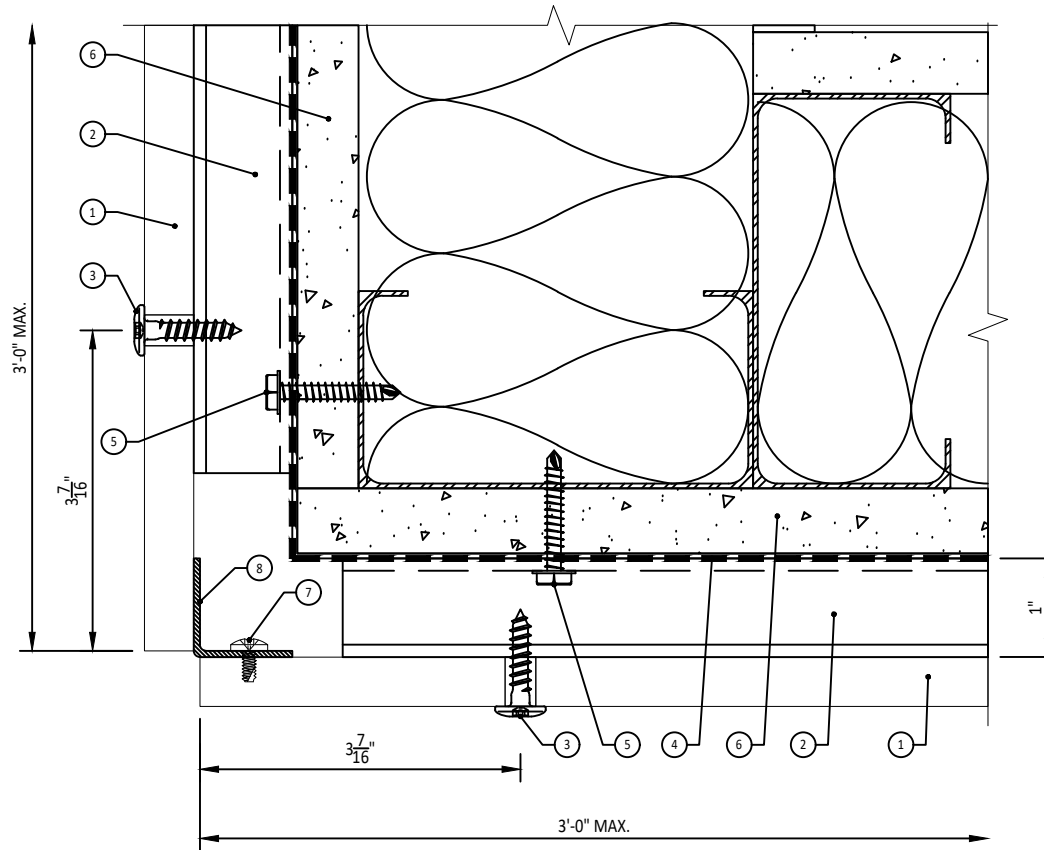
THE INFORMATION CONTAINED IN THIS DRAWING IS  
THE SOLE PROPERTY OF MONARCH METAL  
FABRICATION. ANY REPRODUCTION IN PART OR AS A  
WHOLE WITHOUT THE WRITTEN PERMISSION OF  
MONARCH METAL FABRICATION IS PROHIBITED.

MAT'L	ALUMINUM
GAUGE	--
FINISH	--

	NAME	DATE
DRAWN	KP	10/12/20
CHECKED	BB	---
		

TITLE:			HPL HORIZONTAL EXPOSED DETAILS W/O THERMAL ISOLATION		
SIZE	DWG. NO.	REV.			
A4	OUTSIDE MITER CORNER	--			
SCALE:	1:2	WEIGHT: ≈	-- LBS	SHEET: 6a OF 13	





NO.	DESCRIPTION
1	PANEL (BY OTHERS)
2	HAT-CHANNEL
3	PANEL FASTENER
4	WEATHER BARRIER (BY OTHERS)
5	ANCHORING FASTENER
6	SHEATHING (BY OTHERS)
7	CORNER ANCHOR
8	CORNER CLOSE
--	--
--	--
--	--
--	--
--	--
--	--
--	--
--	--
--	--

SHIMMING SHALL BE IN ACCORDANCE WITH GENERALLY  
ACCEPTED CURTAIN WALL STANDARDS 1/4" : 20'

PROPRIETARY AND CONFIDENTIAL

THE INFORMATION CONTAINED IN THIS DRAWING IS  
THE SOLE PROPERTY OF MONARCH METAL  
FABRICATION. ANY REPRODUCTION IN PART OR AS A  
WHOLE WITHOUT THE WRITTEN PERMISSION OF  
MONARCH METAL FABRICATION IS PROHIBITED.

MAT'L ALUMINUM

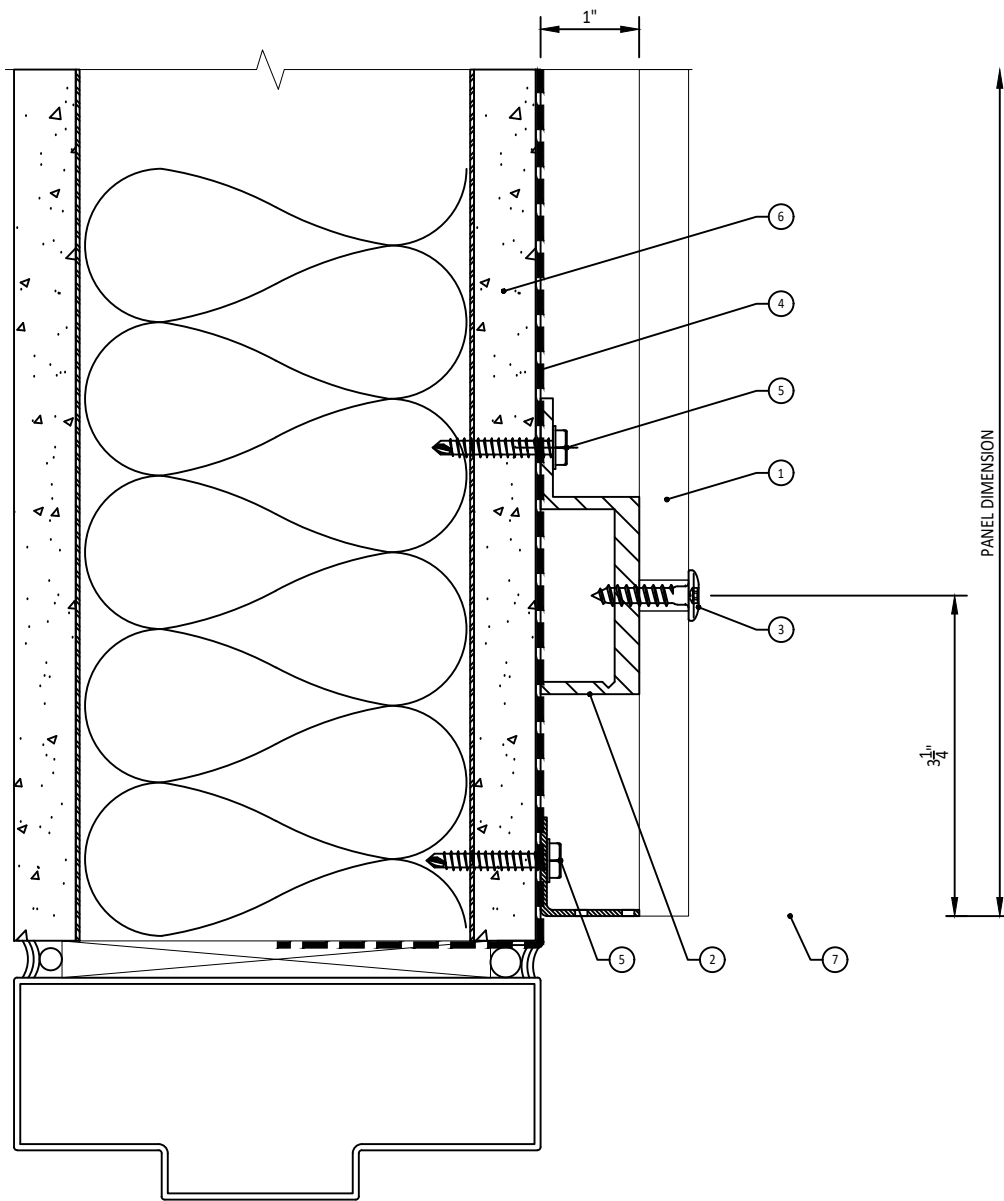
GAUGE --

FINISH --

	NAME	DATE
DRAWN	KP	10/12/20
CHECKED	BB	---

**MONARCH**  
METAL FABRICATION

TITLE: <b>HPL HORIZONTAL EXPOSED DETAILS W/O THERMAL ISOLATION</b>		
SIZE <b>A4</b>	DWG. NO. <b>OUTSIDE MITER CORNER</b>	REV. <b>--</b>
SCALE: <b>1:2</b>	WEIGHT: ≈ <b>-- LBS</b>	SHEET: <b>6b OF 13</b>



NO.	DESCRIPTION
1	PANEL (BY OTHERS)
2	J-CHANNEL
3	PANEL FASTENER
4	WEATHER BARRIER (BY OTHERS)
5	ANCHORING FASTENER
6	SHEATHING (BY OTHERS)
7	VENT SCREEN
--	--
--	--
--	--
--	--
--	--
--	--
--	--
--	--
--	--
--	--

SHIMMING SHALL BE IN ACCORDANCE WITH GENERALLY  
ACCEPTED CURTAIN WALL STANDARDS 1/4" : 20'

PROPRIETARY AND CONFIDENTIAL

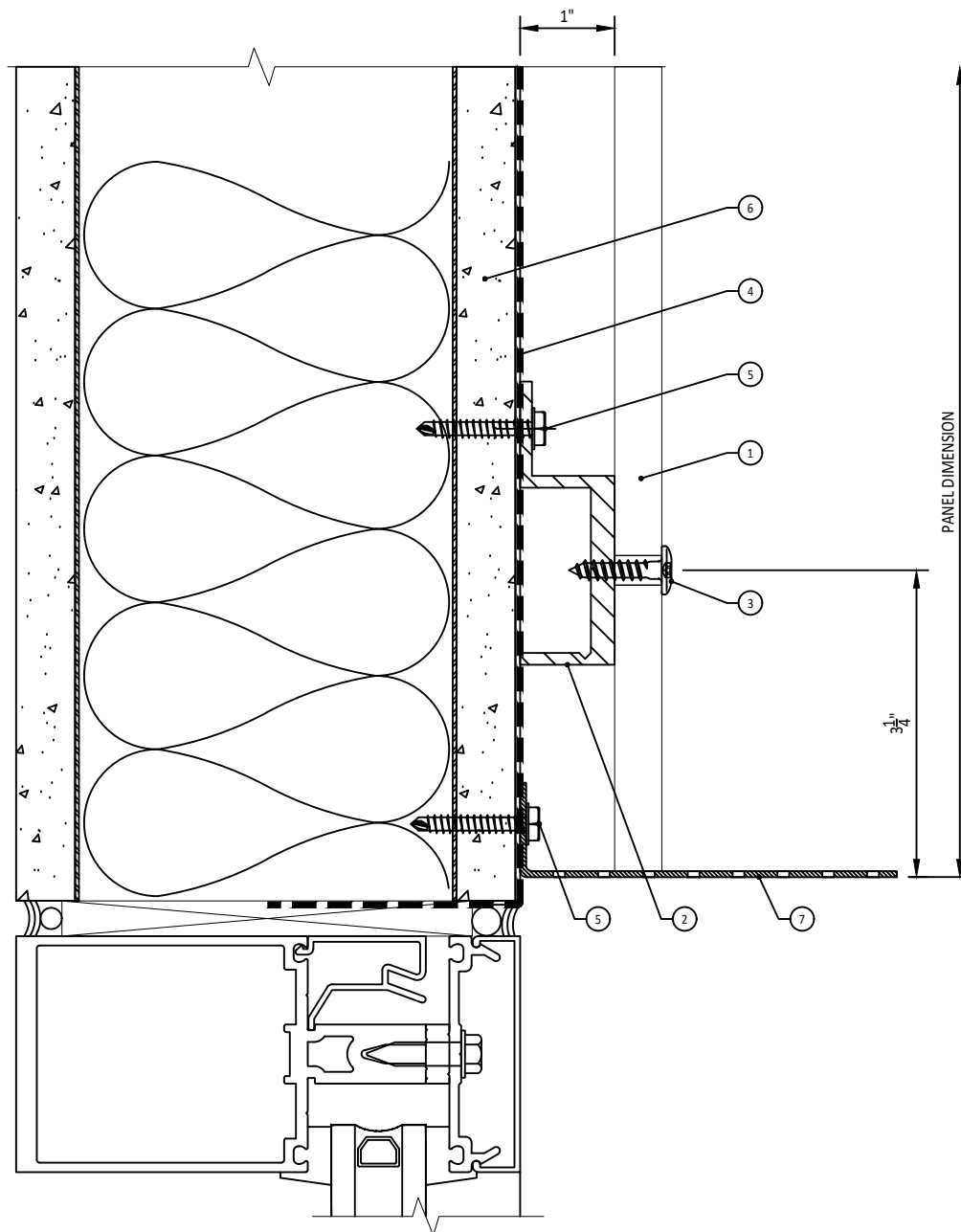
THE INFORMATION CONTAINED IN THIS DRAWING IS  
THE SOLE PROPERTY OF MONARCH METAL  
FABRICATION. ANY REPRODUCTION IN PART OR AS A  
WHOLE WITHOUT THE WRITTEN PERMISSION OF  
MONARCH METAL FABRICATION IS PROHIBITED.

MAT'L	ALUMINUM
GAUGE	--
FINISH	--

	NAME	DATE
DRAWN	KP	10/12/20
CHECKED	BB	---



TITLE: HPL HORIZONTAL EXPOSED DETAILS W/O THERMAL ISOLATION		
SIZE A4	DWG. NO. DOOR HEAD	REV. --
SCALE: 1:2	WEIGHT: ≈ -- LBS	SHEET: 7 OF 13




NO.	DESCRIPTION
1	PANEL (BY OTHERS)
2	J-CHANNEL
3	PANEL FASTENER
4	WEATHER BARRIER (BY OTHERS)
5	ANCHORING FASTENER
6	SHEATHING (BY OTHERS)
7	VENT SCREEN
--	--
--	--
--	--
--	--
--	--
--	--
--	--
--	--
--	--
--	--

SHIMMING SHALL BE IN ACCORDANCE WITH GENERALLY  
ACCEPTED CURTAIN WALL STANDARDS 1/4" : 20'

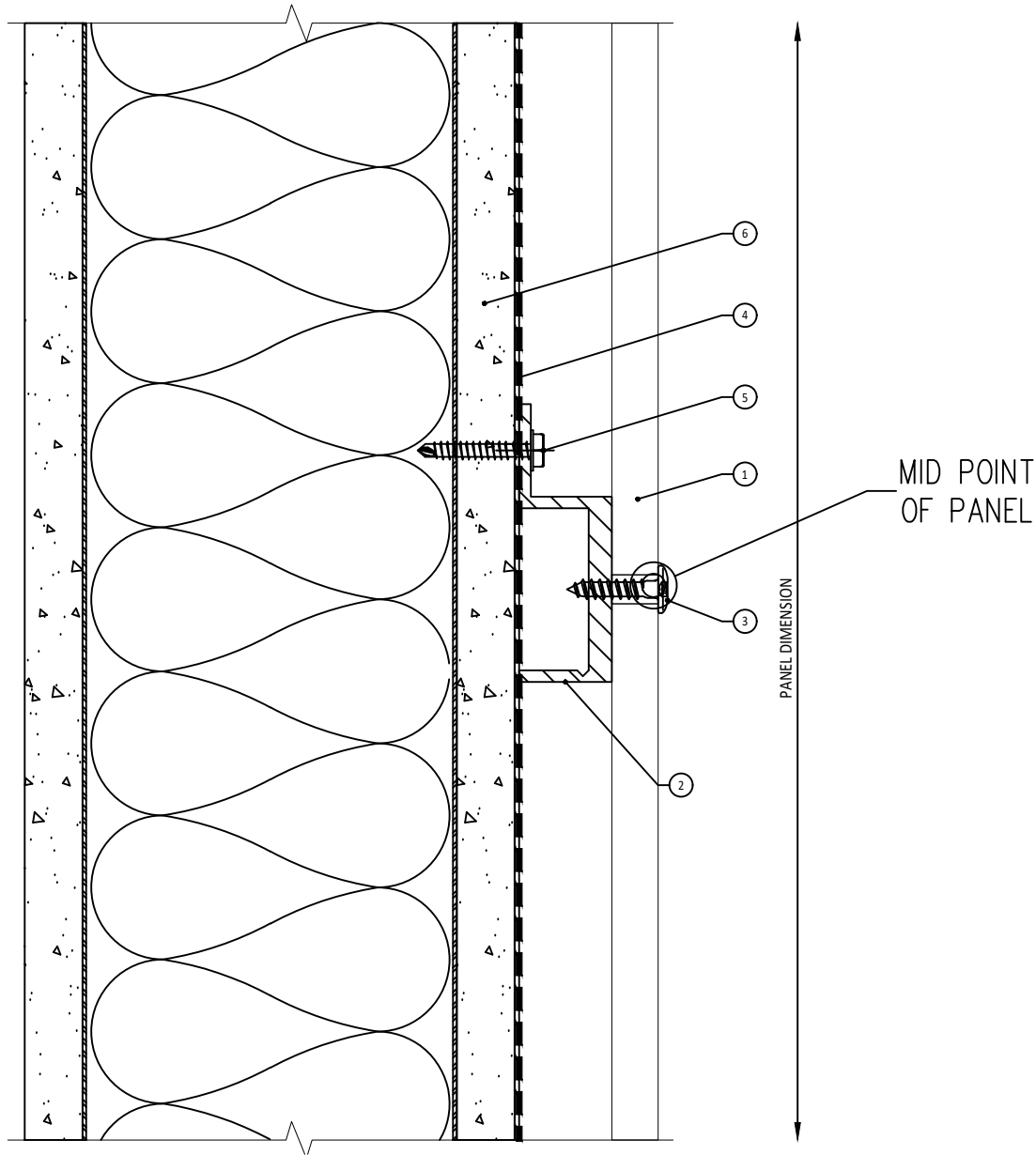
PROPRIETARY AND CONFIDENTIAL

THE INFORMATION CONTAINED IN THIS DRAWING IS  
THE SOLE PROPERTY OF MONARCH METAL  
FABRICATION. ANY REPRODUCTION IN PART OR AS A  
WHOLE WITHOUT THE WRITTEN PERMISSION OF  
MONARCH METAL FABRICATION IS PROHIBITED.

MAT'L	ALUMINUM
GAUGE	--
FINISH	--

	NAME	DATE
DRAWN	KP	10/12/20
CHECKED	BB	---
		

TITLE:			HPL HORIZONTAL EXPOSED DETAILS W/O THERMAL ISOLATION		
SIZE	DWG. NO.			REV.	
A4	WINDOW HEAD			--	
SCALE:	1:2	WEIGHT: ≈	-- LBS	SHEET: 8 OF 13	




NO.	DESCRIPTION
1	PANEL (BY OTHERS)
2	J-CHANNEL
3	PANEL FASTENER
4	WEATHER BARRIER (BY OTHERS)
5	ANCHORING FASTENER
6	SHEATHING (BY OTHERS)
--	--
--	--
--	--
--	--
--	--
--	--
--	--
--	--
--	--
--	--
--	--

SHIMMING SHALL BE IN ACCORDANCE WITH GENERALLY  
ACCEPTED CURTAIN WALL STANDARDS 1/4" : 20'

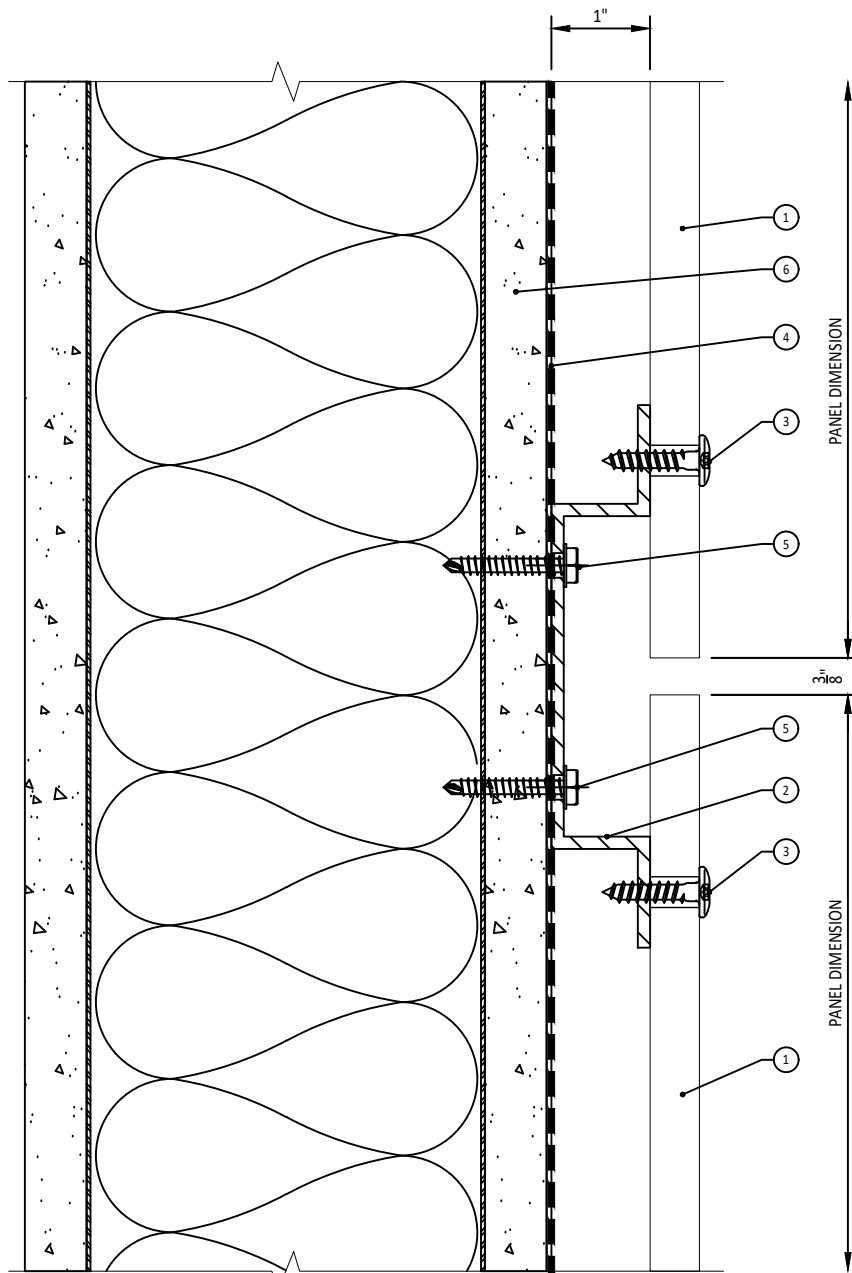
PROPRIETARY AND CONFIDENTIAL

THE INFORMATION CONTAINED IN THIS DRAWING IS  
THE SOLE PROPERTY OF MONARCH METAL  
FABRICATION. ANY REPRODUCTION IN PART OR AS A  
WHOLE WITHOUT THE WRITTEN PERMISSION OF  
MONARCH METAL FABRICATION IS PROHIBITED.

MAT'L	ALUMINUM
GAUGE	--
FINISH	--

	NAME	DATE
DRAWN	KP	10/12/20
CHECKED	BB	---
		

TITLE:			
HPL HORIZONTAL EXPOSED DETAILS W/O THERMAL ISOLATION			
SIZE	DWG. NO.		REV.
A4	HORZ MID PANEL		--
SCALE: 1:2	WEIGHT: ≈ -- LBS		SHEET: 9 OF 13

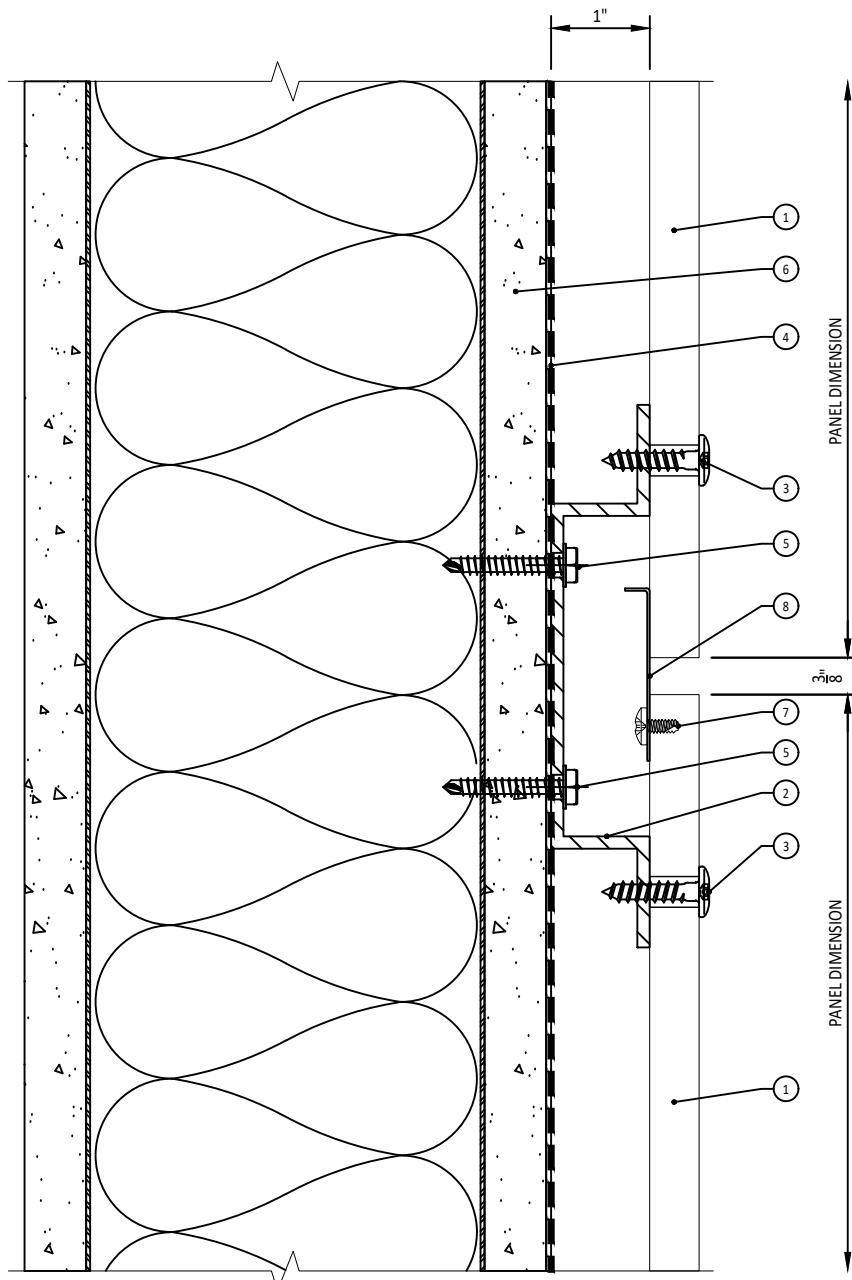


NO.	DESCRIPTION
1	PANEL (BY OTHERS)
2	HAT CHANNEL
3	PANEL FASTENER
4	WEATHER BARRIER (BY OTHERS)
5	ANCHORING FASTENER
6	SHEATHING (BY OTHERS)
--	--
--	--
--	--
--	--
--	--
--	--
--	--
--	--
--	--
--	--
--	--

SHIMMING SHALL BE IN ACCORDANCE WITH GENERALLY  
ACCEPTED CURTAIN WALL STANDARDS 1/4" : 20'

PROPRIETARY AND CONFIDENTIAL  THE INFORMATION CONTAINED IN THIS DRAWING IS THE SOLE PROPERTY OF MONARCH METAL FABRICATION. ANY REPRODUCTION IN PART OR AS A WHOLE WITHOUT THE WRITTEN PERMISSION OF MONARCH METAL FABRICATION IS PROHIBITED.	
	MAT'L ALUMINUM
	GAUGE --
	FINISH --

	NAME	DATE	TITLE:		
DRAWN	KP	10/12/20	HPL HORIZONTAL EXPOSED DETAILS W/O THERMAL ISOLATION		
CHECKED	BB	---	SIZE	DWG. NO.	REV.
			A4	HORZ PANEL JOINT	--
			SCALE: 1:2	WEIGHT: ≈ -- LBS	SHEET: 10 OF 13



NO.	DESCRIPTION
1	PANEL (BY OTHERS)
2	HAT CHANNEL
3	PANEL FASTENER
4	WEATHER BARRIER (BY OTHERS)
5	ANCHORING FASTENER
6	SHEATHING (BY OTHERS)
7	JOINT CLOSURE ANCHOR
8	JOINT CLOSURE
--	--
--	--
--	--
--	--
--	--
--	--
--	--
--	--
--	--

SHIMMING SHALL BE IN ACCORDANCE WITH GENERALLY  
ACCEPTED CURTAIN WALL STANDARDS 1/4" : 20'

PROPRIETARY AND CONFIDENTIAL

THE INFORMATION CONTAINED IN THIS DRAWING IS  
THE SOLE PROPERTY OF MONARCH METAL  
FABRICATION. ANY REPRODUCTION IN PART OR AS A  
WHOLE WITHOUT THE WRITTEN PERMISSION OF  
MONARCH METAL FABRICATION IS PROHIBITED.

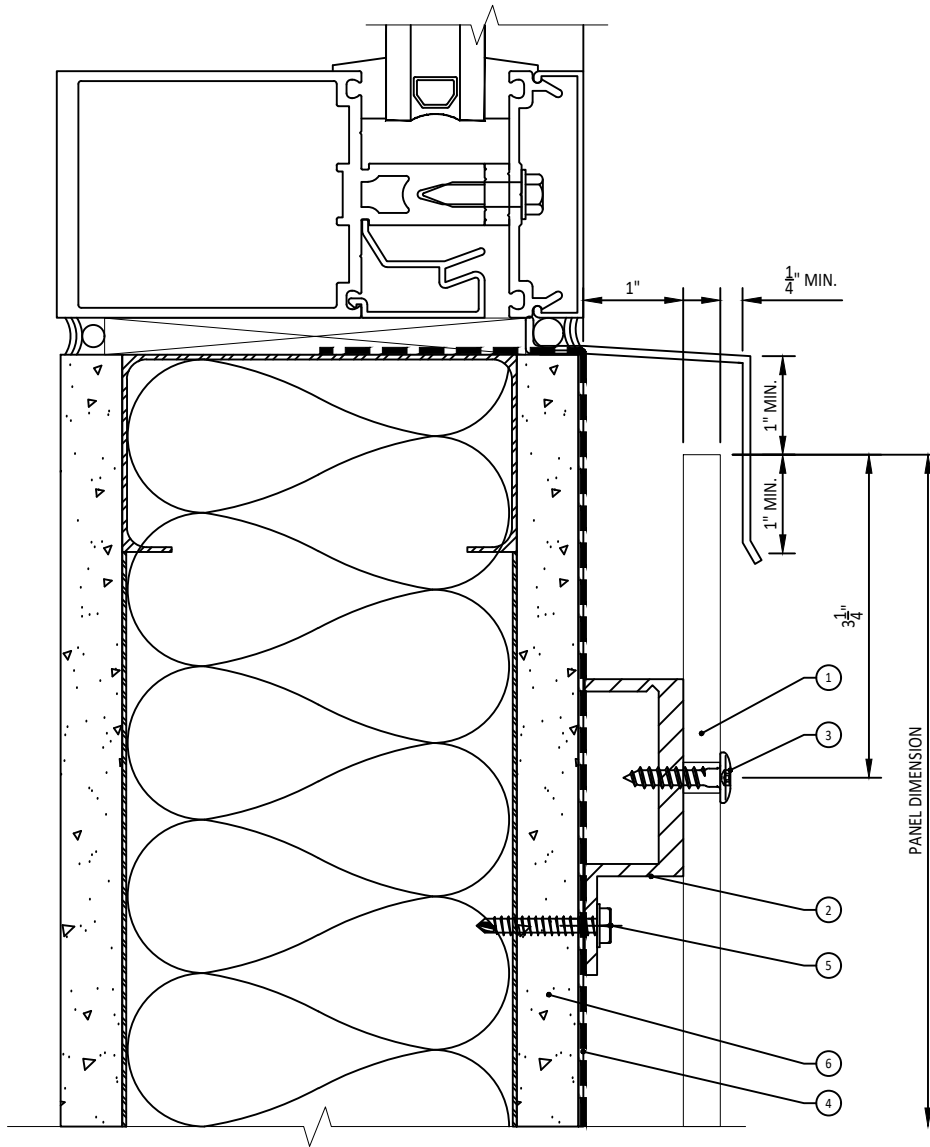
MAT'L	ALUMINUM
GAUGE	--
FINISH	--

	NAME	DATE
DRAWN	KP	10/12/20
CHECKED	BB	--



TITLE:  
**HPL HORIZONTAL EXPOSED DETAILS  
W/O THERMAL ISOLATION**

SIZE	DWG. NO.	REV.
A4	HORZ PANEL JOINT	--
SCALE:	1:2	WEIGHT: ≈ -- LBS
SHEET	10a	OF 13




NO.	DESCRIPTION
1	PANEL (BY OTHERS)
2	J-CHANNEL
3	PANEL FASTENER
4	WEATHER BARRIER (BY OTHERS)
5	ANCHORING FASTENER
6	SHEATHING (BY OTHERS)
--	--
--	--
--	--
--	--
--	--
--	--
--	--
--	--
--	--
--	--
--	--

SHIMMING SHALL BE IN ACCORDANCE WITH GENERALLY  
ACCEPTED CURTAIN WALL STANDARDS 1/4" : 20'

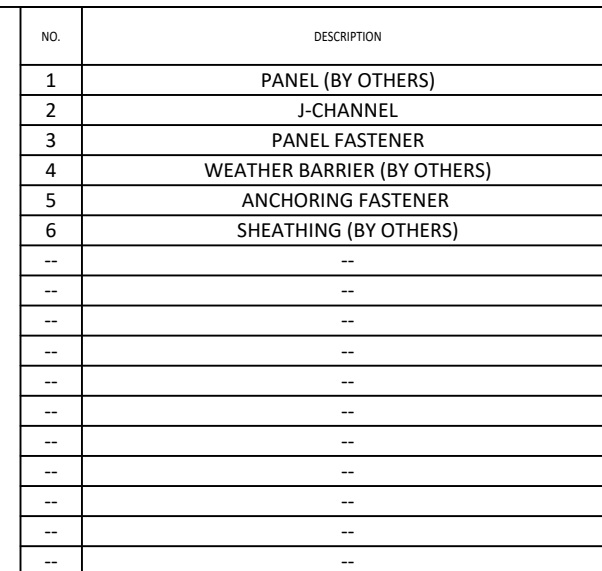
PROPRIETARY AND CONFIDENTIAL

THE INFORMATION CONTAINED IN THIS DRAWING IS  
THE SOLE PROPERTY OF MONARCH METAL  
FABRICATION. ANY REPRODUCTION IN PART OR AS A  
WHOLE WITHOUT THE WRITTEN PERMISSION OF  
MONARCH METAL FABRICATION IS PROHIBITED.

MAT'L	ALUMINUM
GAUGE	--
FINISH	--

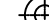
	NAME	DATE
DRAWN	KP	10/12/20
CHECKED	BB	---
		

TITLE:			HPL HORIZONTAL EXPOSED DETAILS W/O THERMAL ISOLATION		
SIZE	DWG. NO.			REV.	
A4		WINDOW SILL		--	
SCALE:	1:2	WEIGHT: ≈	-- LBS	SHEET: 11 OF 13	




PROPRIETARY AND CONFIDENTIAL

THE INFORMATION CONTAINED IN THIS DRAWING IS  
THE SOLE PROPERTY OF MONARCH METAL  
FABRICATION. ANY REPRODUCTION IN PART OR AS A  
WHOLE WITHOUT THE WRITTEN PERMISSION OF  
MONARCH METAL FABRICATION IS PROHIBITED.

	
MAT'L	ALUMINUM
GAUGE	--
FINISH	--

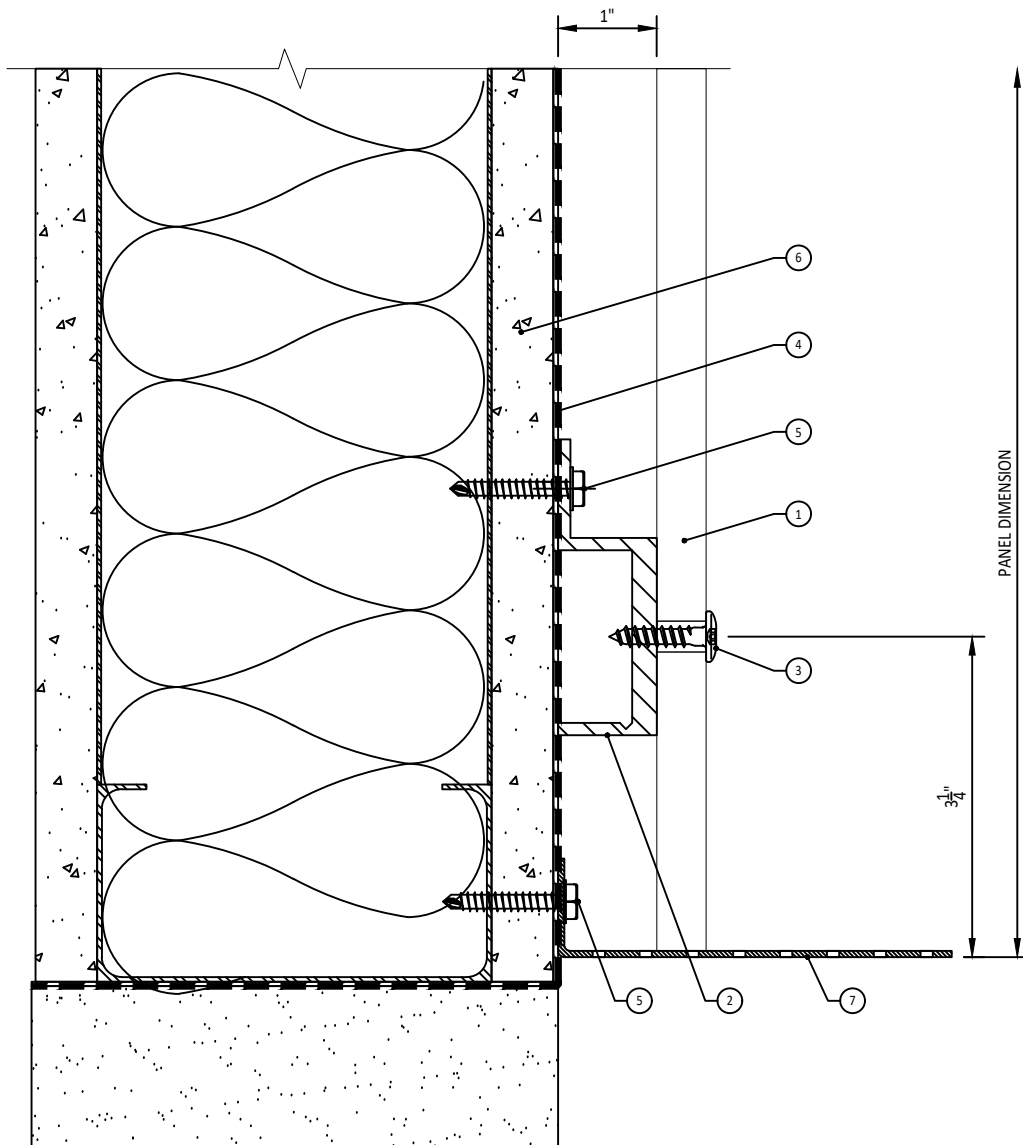
	NAME	DATE
DRAWN	KP	10/12/20
CHECKED	BB	---



**MONARCH**  
METAL FABRICATION

SIZE	DWG. NO.	REV.
A4	PARAPET CAP	--
SCALE:	1:2	WEIGHT: ≈ -- LBS
		SHEET: 12 OF 13





NO.	DESCRIPTION
1	PANEL (BY OTHERS)
2	J-CHANNEL
3	PANEL FASTENER
4	WEATHER BARRIER (BY OTHERS)
5	ANCHORING FASTENER
6	SHEATHING (BY OTHERS)
7	VENT SCREEN
--	--
--	--
--	--
--	--
--	--
--	--
--	--
--	--
--	--
--	--
--	--

SHIMMING SHALL BE IN ACCORDANCE WITH GENERALLY  
ACCEPTED CURTAIN WALL STANDARDS 1/4" : 20'

PROPRIETARY AND CONFIDENTIAL

THE INFORMATION CONTAINED IN THIS DRAWING IS  
THE SOLE PROPERTY OF MONARCH METAL  
FABRICATION. ANY REPRODUCTION IN PART OR AS A  
WHOLE WITHOUT THE WRITTEN PERMISSION OF  
MONARCH METAL FABRICATION IS PROHIBITED.

MAT'L	ALUMINUM
GAUGE	--
FINISH	--

	NAME	DATE
DRAWN	KP	10/12/20
CHECKED	BB	---



TITLE: HPL HORIZONTAL EXPOSED DETAILS W/O THERMAL ISOLATION		
SIZE A4	DWG. NO. FLOOR BASE PANEL	REV. --
SCALE: 1:2	WEIGHT: ≈ -- LBS	SHEET: 13 OF 13