

| NO. | DESCRIPTION |
|-----|-----------------------------|
| 1 | PANEL (BY OTHERS) |
| 2 | J-CHANNEL |
| 3 | SYSTEM CLOSURE |
| 4 | RAIL |
| 5 | FIXED BRACKET |
| 6 | CLIP ANCHOR |
| 7 | RAIL FASTENER |
| 8 | WEATHER BARRIER (BY OTHERS) |
| 9 | ANCHORING FASTENER |
| 10 | SHEATHING (BY OTHERS) |
| -- | -- |
| -- | -- |
| -- | -- |
| -- | -- |
| -- | -- |
| -- | -- |
| -- | -- |

ALL CONCEALED FASTENER LOCATIONS TO BE DETERMINED BY PANEL MANUFACTURER RECOMMENDATIONS

SHIMMING SHALL BE IN ACCORDANCE WITH GENERALLY ACCEPTED CURTAIN WALL STANDARDS 1/4" : 20'

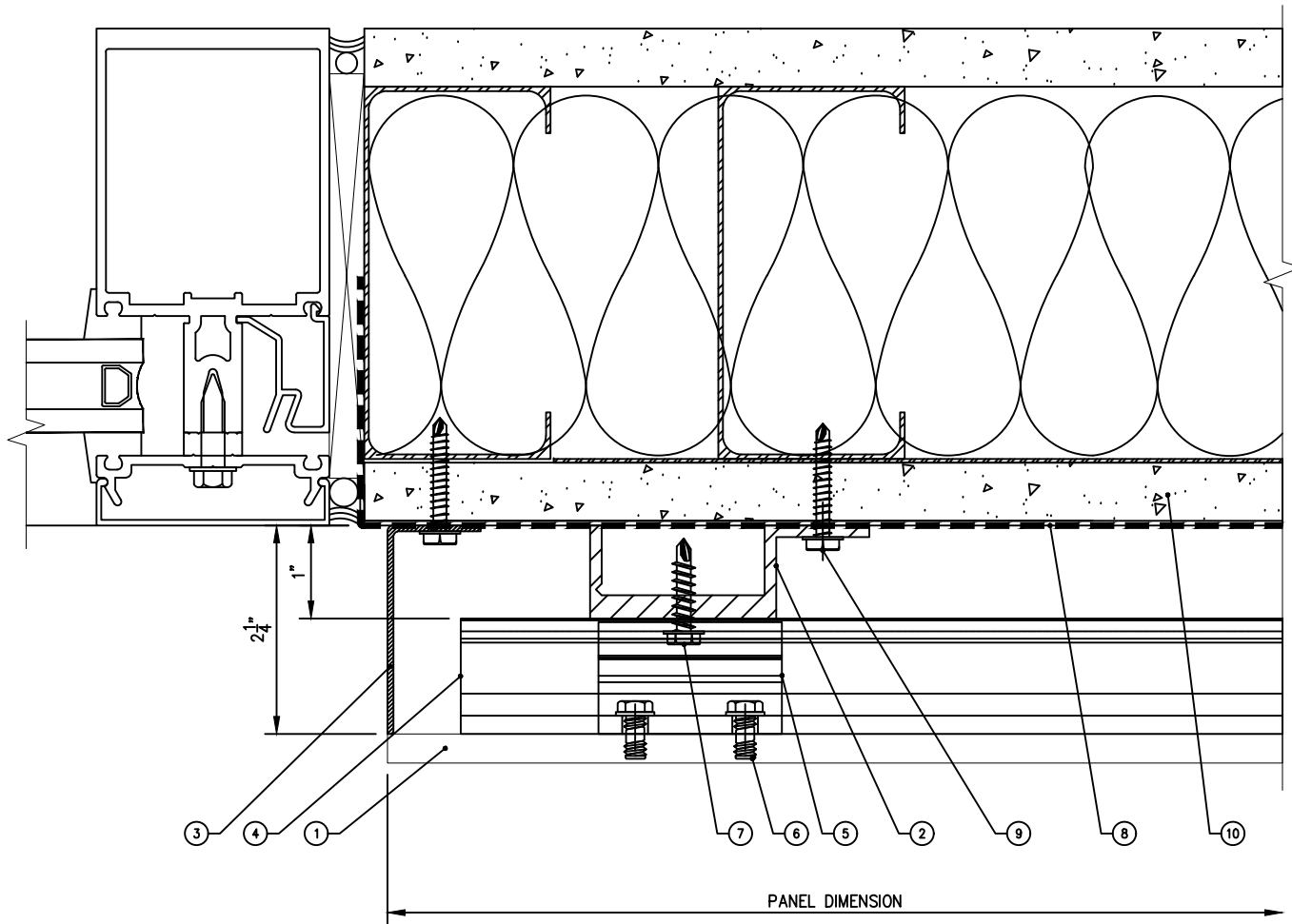
PROPRIETARY AND CONFIDENTIAL

THE INFORMATION CONTAINED IN THIS DRAWING IS THE SOLE PROPERTY OF MONARCH METAL FABRICATION. ANY REPRODUCTION IN PART OR AS A WHOLE WITHOUT THE WRITTEN PERMISSION OF MONARCH METAL FABRICATION IS PROHIBITED.

| | |
|--------|----------|
| MAT'L | ALUMINUM |
| GAUGE | -- |
| FINISH | -- |

| | | |
|---------|------|---------|
| | NAME | DATE |
| DRAWN | KP | 10/2/20 |
| CHECKED | BB | --- |
| | | |

| | | |
|---|------------------|----------------|
| TITLE: HPL VERTICAL CONCEALED W/O THERMAL ISOLATION | | |
| SIZE | DWG. NO. | REV. |
| A4 | DOOR JAMB | -- |
| SCALE: 1:2 | WEIGHT: ~ -- LBS | SHEET: 1 OF 13 |



| NO. | DESCRIPTION |
|-----|-----------------------------|
| 1 | PANEL (BY OTHERS) |
| 2 | J-CHANNEL |
| 3 | SYSTEM CLOSURE |
| 4 | RAIL |
| 5 | FIXED BRACKET |
| 6 | CLIP ANCHOR |
| 7 | RAIL FASTENER |
| 8 | WEATHER BARRIER (BY OTHERS) |
| 9 | ANCHORING FASTENER |
| 10 | SHEATHING (BY OTHERS) |
| -- | -- |
| -- | -- |
| -- | -- |
| -- | -- |
| -- | -- |
| -- | -- |
| -- | -- |

ALL CONCEALED FASTENER LOCATIONS TO BE DETERMINED BY PANEL MANUFACTURER RECOMMENDATIONS

SHIMMING SHALL BE IN ACCORDANCE WITH GENERALLY ACCEPTED CURTAIN WALL STANDARDS 1/4" : 20'

PROPRIETARY AND CONFIDENTIAL

THE INFORMATION CONTAINED IN THIS DRAWING IS THE SOLE PROPERTY OF MONARCH METAL FABRICATION. ANY REPRODUCTION IN PART OR AS A WHOLE WITHOUT THE WRITTEN PERMISSION OF MONARCH METAL FABRICATION IS PROHIBITED.

MAT'L ALUMINUM

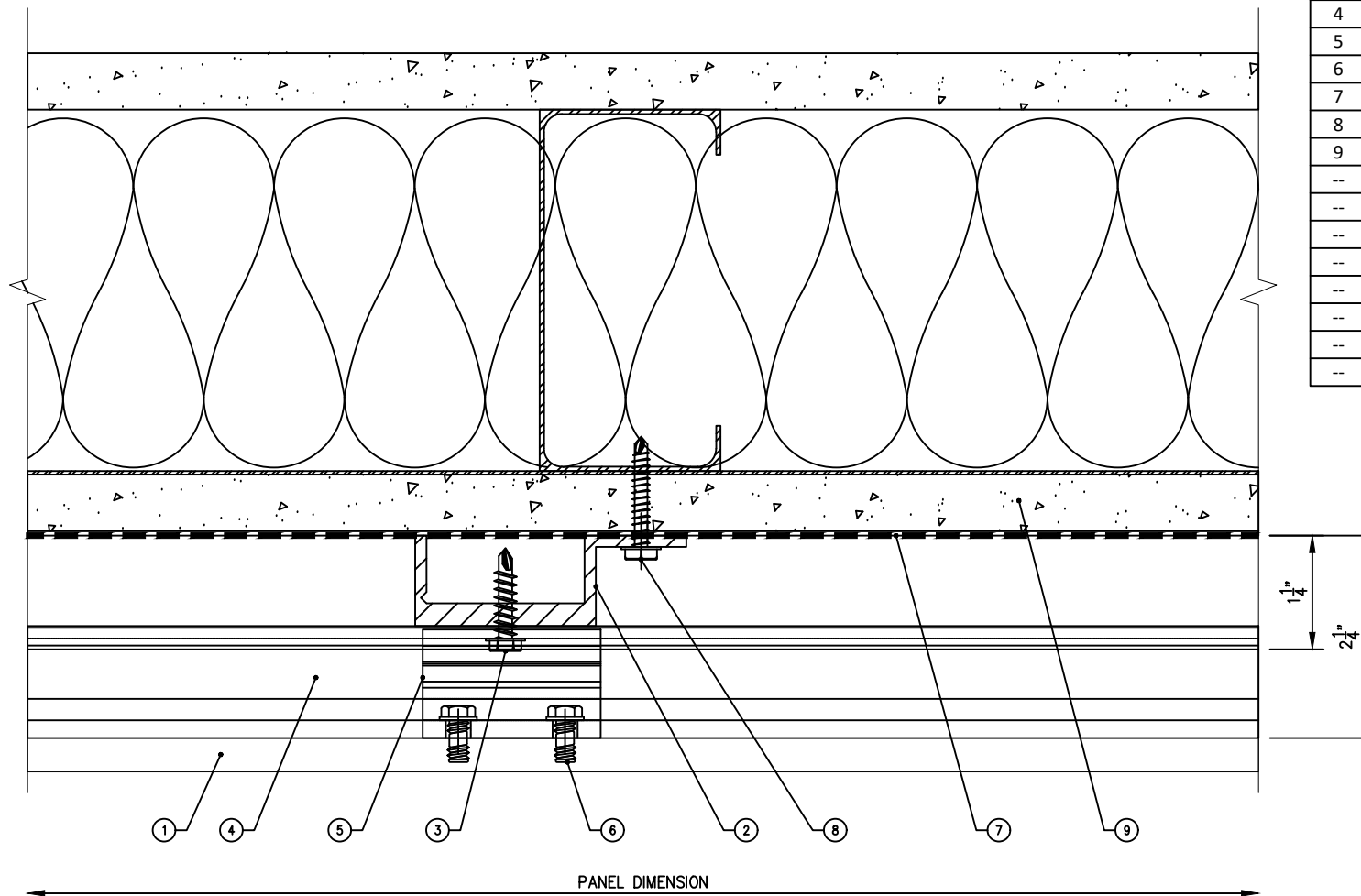
GAUGE --

FINISH --

| | | |
|---------|------|---------|
| | NAME | DATE |
| DRAWN | KP | 10/2/20 |
| CHECKED | BB | --- |

MONARCH
METAL FABRICATION

| | | |
|---|----------------------|----------------|
| TITLE: HPL VERTICAL CONCEALED W/O THERMAL ISOLATION | | |
| SIZE: A4 | DWG. NO. WINDOW JAMB | REV. -- |
| SCALE: 1:2 | WEIGHT: ≈ -- LBS | SHEET: 2 OF 13 |



| NO. | DESCRIPTION |
|-----|-----------------------------|
| 1 | PANEL (BY OTHERS) |
| 2 | J-CHANNEL |
| 3 | RAIL FASTENER |
| 4 | RAIL |
| 5 | FIXED BRACKET |
| 6 | CLIP ANCHOR |
| 7 | WEATHER BARRIER (BY OTHERS) |
| 8 | ANCHORING FASTENER |
| 9 | SHEATHING (BY OTHERS) |
| -- | -- |
| -- | -- |
| -- | -- |
| -- | -- |
| -- | -- |
| -- | -- |
| -- | -- |
| -- | -- |

ALL CONCEALED FASTENER LOCATIONS TO BE DETERMINED BY PANEL MANUFACTURER RECOMMENDATIONS

SHIMMING SHALL BE IN ACCORDANCE WITH GENERALLY ACCEPTED CURTAIN WALL STANDARDS 1/4" : 20'

PROPRIETARY AND CONFIDENTIAL

THE INFORMATION CONTAINED IN THIS DRAWING IS THE SOLE PROPERTY OF MONARCH METAL FABRICATION. ANY REPRODUCTION IN PART OR AS A WHOLE WITHOUT THE WRITTEN PERMISSION OF MONARCH METAL FABRICATION IS PROHIBITED.

MAT'L ALUMINUM

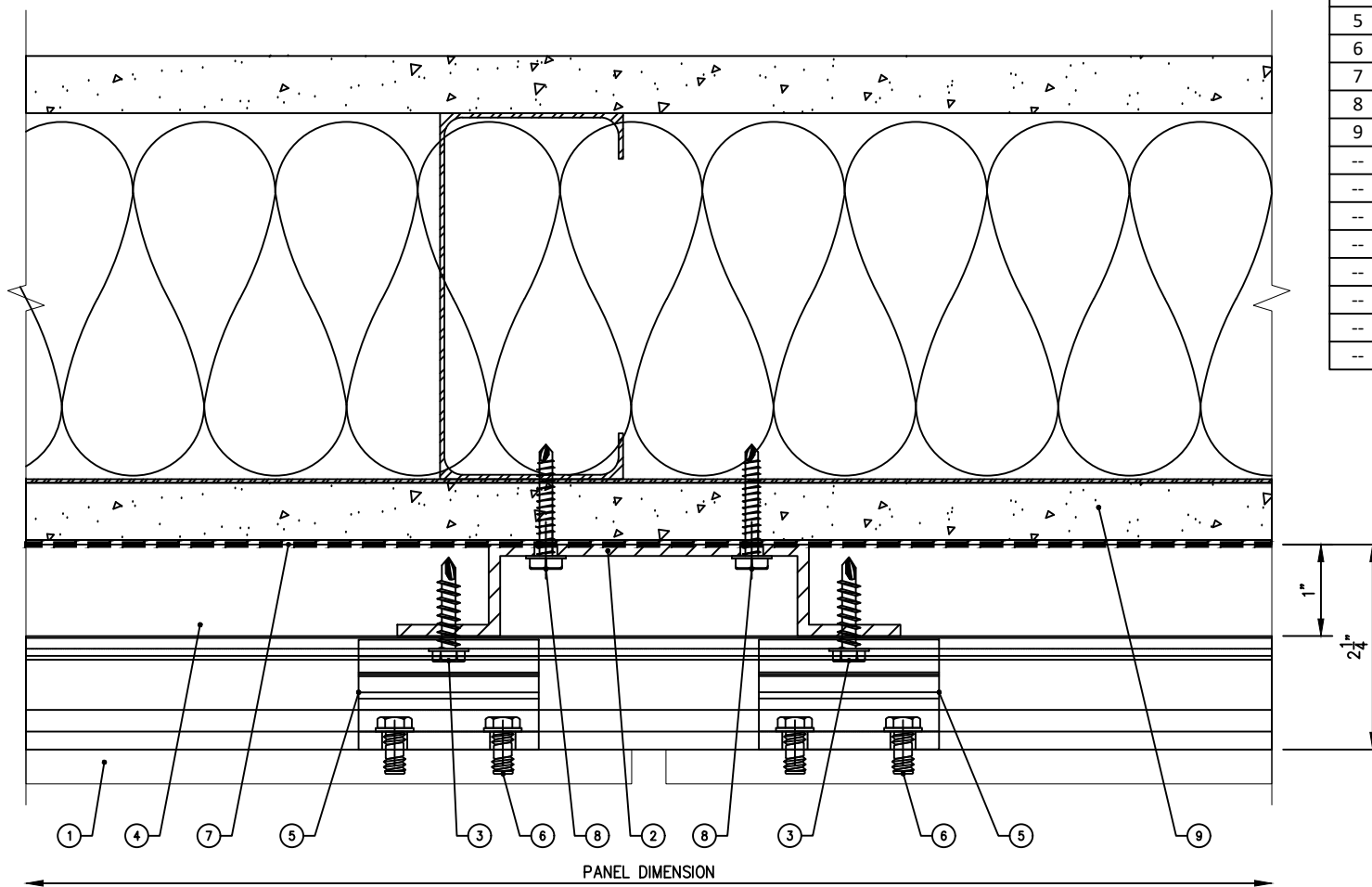
GAUGE --

FINISH --

| | | |
|---------|------|---------|
| | NAME | DATE |
| DRAWN | KP | 10/2/20 |
| CHECKED | BB | --- |

MONARCH
METAL FABRICATION

| | | |
|---|-----------------------------|----------------|
| TITLE: HPL VERTICAL CONCEALED W/O THERMAL ISOLATION | | |
| SIZE: A4 | DWG. NO. VERTICAL MID PANEL | REV. -- |
| SCALE: 1:2 | WEIGHT: ~ -- LBS | SHEET: 3 OF 13 |



| NO. | DESCRIPTION |
|-----|-----------------------------|
| 1 | PANEL (BY OTHERS) |
| 2 | HAT-CHANNEL |
| 3 | RAIL FASTENER |
| 4 | RAIL |
| 5 | FIXED BRACKET |
| 6 | CLIP ANCHOR |
| 7 | WEATHER BARRIER (BY OTHERS) |
| 8 | ANCHORING FASTENER |
| 9 | SHEATHING (BY OTHERS) |
| -- | -- |
| -- | -- |
| -- | -- |
| -- | -- |
| -- | -- |
| -- | -- |
| -- | -- |

ALL CONCEALED FASTENER LOCATIONS TO BE DETERMINED BY PANEL MANUFACTURER RECOMMENDATIONS

SHIMMING SHALL BE IN ACCORDANCE WITH GENERALLY ACCEPTED CURTAIN WALL STANDARDS 1/4" : 20'

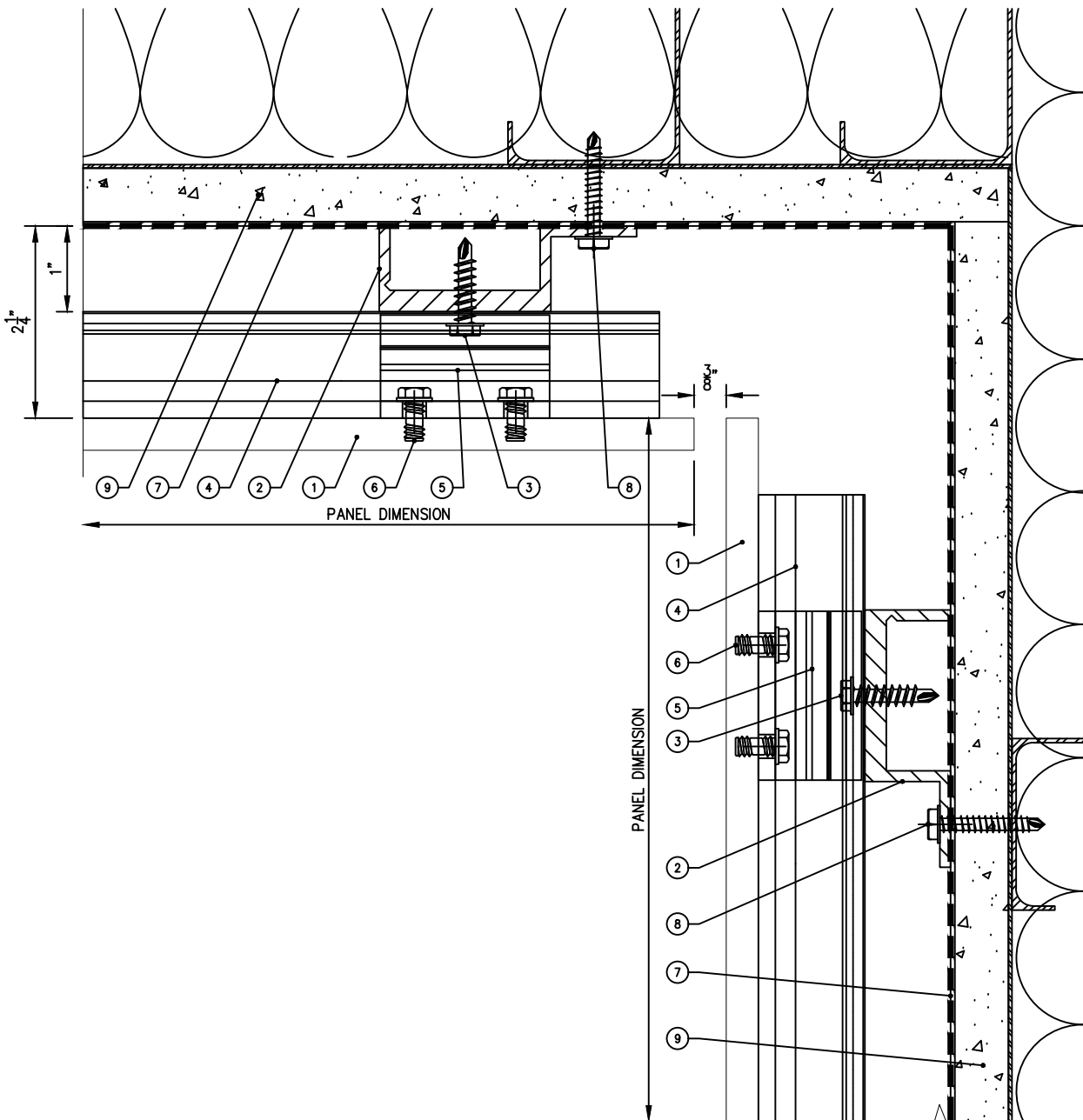
PROPRIETARY AND CONFIDENTIAL

THE INFORMATION CONTAINED IN THIS DRAWING IS THE SOLE PROPERTY OF MONARCH METAL FABRICATION. ANY REPRODUCTION IN PART OR AS A WHOLE WITHOUT THE WRITTEN PERMISSION OF MONARCH METAL FABRICATION IS PROHIBITED.

| | |
|--------|----------|
| | |
| MAT'L | ALUMINUM |
| GAUGE | -- |
| FINISH | -- |

| | | |
|---------|------|---------|
| | NAME | DATE |
| DRAWN | KP | 10/2/20 |
| CHECKED | BB | --- |
| | | |

| | | |
|---|-------------------------------|----------------|
| TITLE: HPL VERTICAL CONCEALED W/O THERMAL ISOLATION | | |
| SIZE: A4 | DWG. NO. VERTICAL PANEL JOINT | REV. -- |
| SCALE: 1:2 | WEIGHT: ≈ -- LBS | SHEET: 4 OF 13 |



| NO. | DESCRIPTION |
|-----|-----------------------------|
| 1 | PANEL (BY OTHERS) |
| 2 | J-CHANNEL |
| 3 | RAIL FASTENER |
| 4 | RAIL |
| 5 | FIXED BRACKET |
| 6 | CLIP ANCHOR |
| 7 | WEATHER BARRIER (BY OTHERS) |
| 8 | ANCHORING FASTENER |
| 9 | SHEATHING (BY OTHERS) |
| -- | -- |
| -- | -- |
| -- | -- |
| -- | -- |
| -- | -- |
| -- | -- |
| -- | -- |
| -- | -- |

ALL CONCEALED FASTENER LOCATIONS TO BE DETERMINED BY PANEL MANUFACTURER RECOMMENDATIONS

SHIMMING SHALL BE IN ACCORDANCE WITH GENERALLY ACCEPTED CURTAIN WALL STANDARDS 1/4" : 20'

PROPRIETARY AND CONFIDENTIAL

THE INFORMATION CONTAINED IN THIS DRAWING IS THE SOLE PROPERTY OF MONARCH METAL FABRICATION. ANY REPRODUCTION IN PART OR AS A WHOLE WITHOUT THE WRITTEN PERMISSION OF MONARCH METAL FABRICATION IS PROHIBITED.

MAT'L ALUMINUM

GAUGE --

FINISH --

NAME DATE

DRAWN KP 10/2/20

CHECKED BB ---

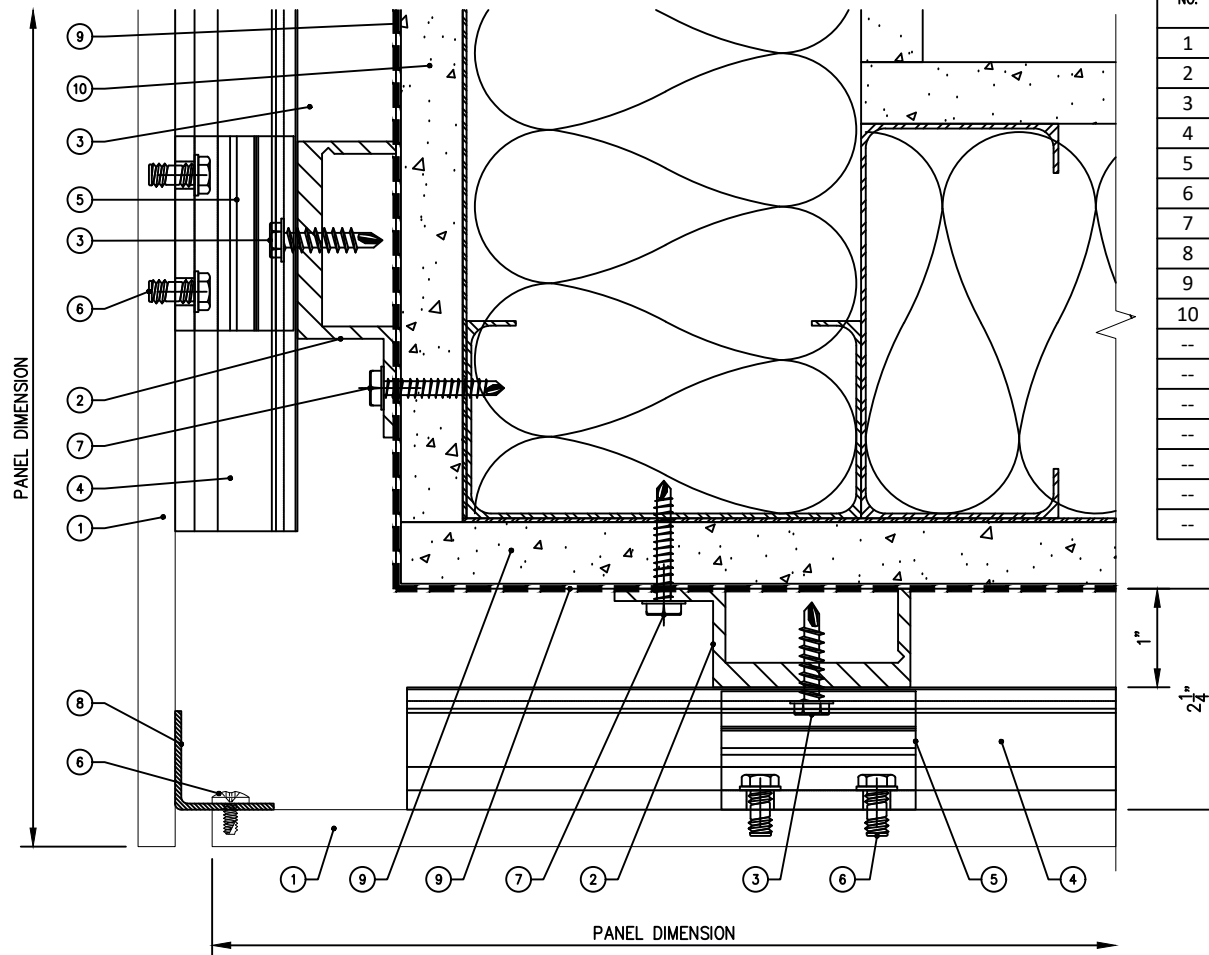
MONARCH
METAL FABRICATION

TITLE: HPL VERTICAL CONCEALED W/O THERMAL ISOLATION

SIZE DWG. NO. REV.

A4 INSIDE CORNER --

SCALE: 1:2 WEIGHT: ~ -- LBS SHEET: 5 OF 13



| NO. | DESCRIPTION |
|-----|-----------------------------|
| 1 | PANEL (BY OTHERS) |
| 2 | J-CHANNEL |
| 3 | RAIL FASTENER |
| 4 | RAIL |
| 5 | FIXED BRACKET |
| 6 | CLIP ANCHOR |
| 7 | ANCHORING FASTENER |
| 8 | CORNER CLOSURE |
| 9 | WEATHER BARRIER (BY OTHERS) |
| 10 | SHEATHING (BY OTHERS) |
| -- | -- |
| -- | -- |
| -- | -- |
| -- | -- |
| -- | -- |
| -- | -- |
| -- | -- |

ALL CONCEALED FASTENER LOCATIONS TO BE DETERMINED BY PANEL MANUFACTURER RECOMMENDATIONS

SHIMMING SHALL BE IN ACCORDANCE WITH GENERALLY ACCEPTED CURTAIN WALL STANDARDS 1/4" : 20'

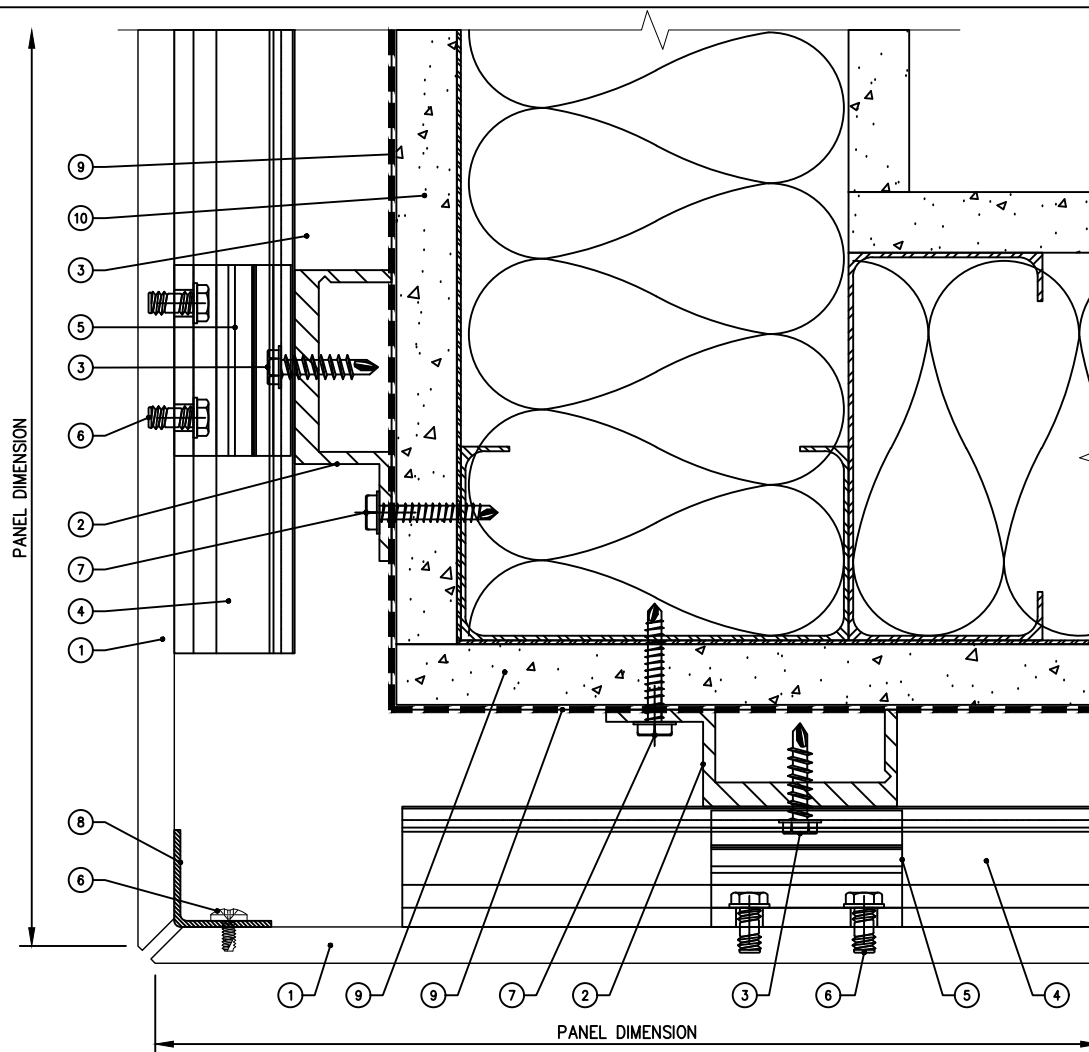
PROPRIETARY AND CONFIDENTIAL

THE INFORMATION CONTAINED IN THIS DRAWING IS THE SOLE PROPERTY OF MONARCH METAL FABRICATION. ANY REPRODUCTION IN PART OR AS A WHOLE WITHOUT THE WRITTEN PERMISSION OF MONARCH METAL FABRICATION IS PROHIBITED.

| | |
|--------|----------|
| MAT'L | ALUMINUM |
| GAUGE | -- |
| FINISH | -- |

| | | |
|---------|------|---------|
| | NAME | DATE |
| DRAWN | KP | 10/2/20 |
| CHECKED | BB | --- |
| | | |

| | | | |
|--------|--|------------------|----------------|
| TITLE: | HPL VERTICAL CONCEALED W/O THERMAL ISOLATION | | |
| SIZE | DWG. NO. | REV. | |
| A4 | OUTSIDE CORNER | -- | |
| SCALE: | 1:2 | WEIGHT: ≈ -- LBS | SHEET: 6 OF 13 |



| NO. | DESCRIPTION |
|-----|-----------------------------|
| 1 | PANEL (BY OTHERS) |
| 2 | J-CHANNEL |
| 3 | RAIL FASTENER |
| 4 | RAIL |
| 5 | FIXED BRACKET |
| 6 | CLIP ANCHOR |
| 7 | ANCHORING FASTENER |
| 8 | CORNER CLOSURE |
| 9 | WEATHER BARRIER (BY OTHERS) |
| 10 | SHEATHING (BY OTHERS) |
| -- | -- |
| -- | -- |
| -- | -- |
| -- | -- |
| -- | -- |
| -- | -- |
| -- | -- |

ALL CONCEALED FASTENER LOCATIONS TO BE DETERMINED BY PANEL MANUFACTURER RECOMMENDATIONS

SHIMMING SHALL BE IN ACCORDANCE WITH GENERALLY ACCEPTED CURTAIN WALL STANDARDS 1/4" : 20'

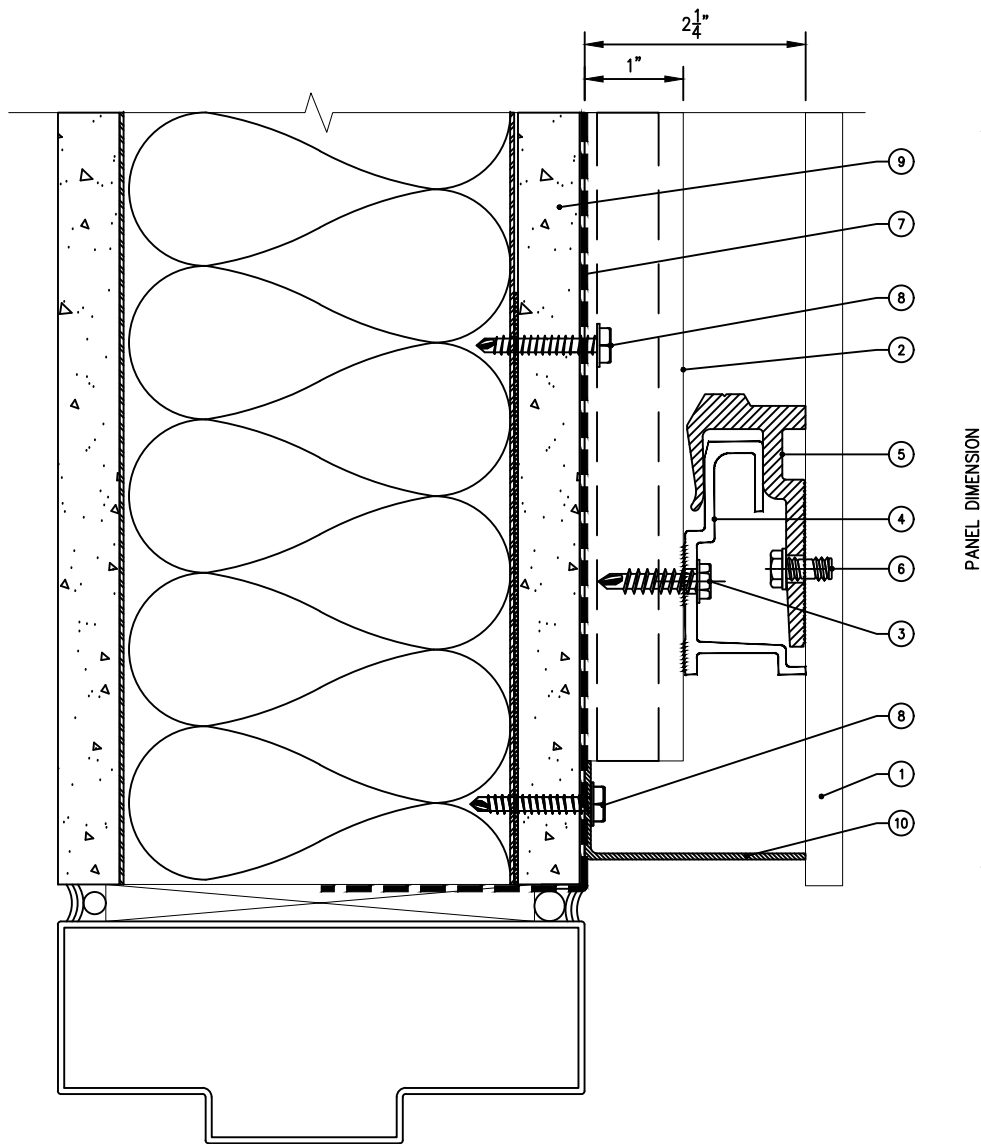
PROPRIETARY AND CONFIDENTIAL

THE INFORMATION CONTAINED IN THIS DRAWING IS THE SOLE PROPERTY OF MONARCH METAL FABRICATION. ANY REPRODUCTION IN PART OR AS A WHOLE WITHOUT THE WRITTEN PERMISSION OF MONARCH METAL FABRICATION IS PROHIBITED.

| | |
|--------|----------|
| | |
| MAT'L | ALUMINUM |
| GAUGE | -- |
| FINISH | -- |

| | | |
|---------|------|---------|
| | NAME | DATE |
| DRAWN | KP | 10/2/20 |
| CHECKED | BB | --- |
| | | |

| | | |
|---|------------------------|----------------|
| TITLE: HPL VERTICAL CONCEALED W/O THERMAL ISOLATION | | |
| SIZE | DWG. NO. | REV. |
| A4 | OUTSIDE MITERED CORNER | -- |
| SCALE: 1:2 | WEIGHT: ≈ -- LBS | SHEET 6a OF 13 |



| NO. | DESCRIPTION |
|-----|-----------------------------|
| 1 | PANEL (BY OTHERS) |
| 2 | J-CHANNEL |
| 3 | RAIL FASTENER |
| 4 | RAIL |
| 5 | FIXED BRACKET |
| 6 | CLIP ANCHOR |
| 7 | WEATHER BARRIER (BY OTHERS) |
| 8 | ANCHORING FASTENER |
| 9 | SHEATHING (BY OTHERS) |
| 10 | SYSTEM CLOSURE |
| -- | -- |
| -- | -- |
| -- | -- |
| -- | -- |
| -- | -- |
| -- | -- |
| -- | -- |

ALL CONCEALED FASTENER LOCATIONS TO BE DETERMINED BY PANEL MANUFACTURER RECOMMENDATIONS

SHIMMING SHALL BE IN ACCORDANCE WITH GENERALLY ACCEPTED CURTAIN WALL STANDARDS 1/4" : 20'

PROPRIETARY AND CONFIDENTIAL

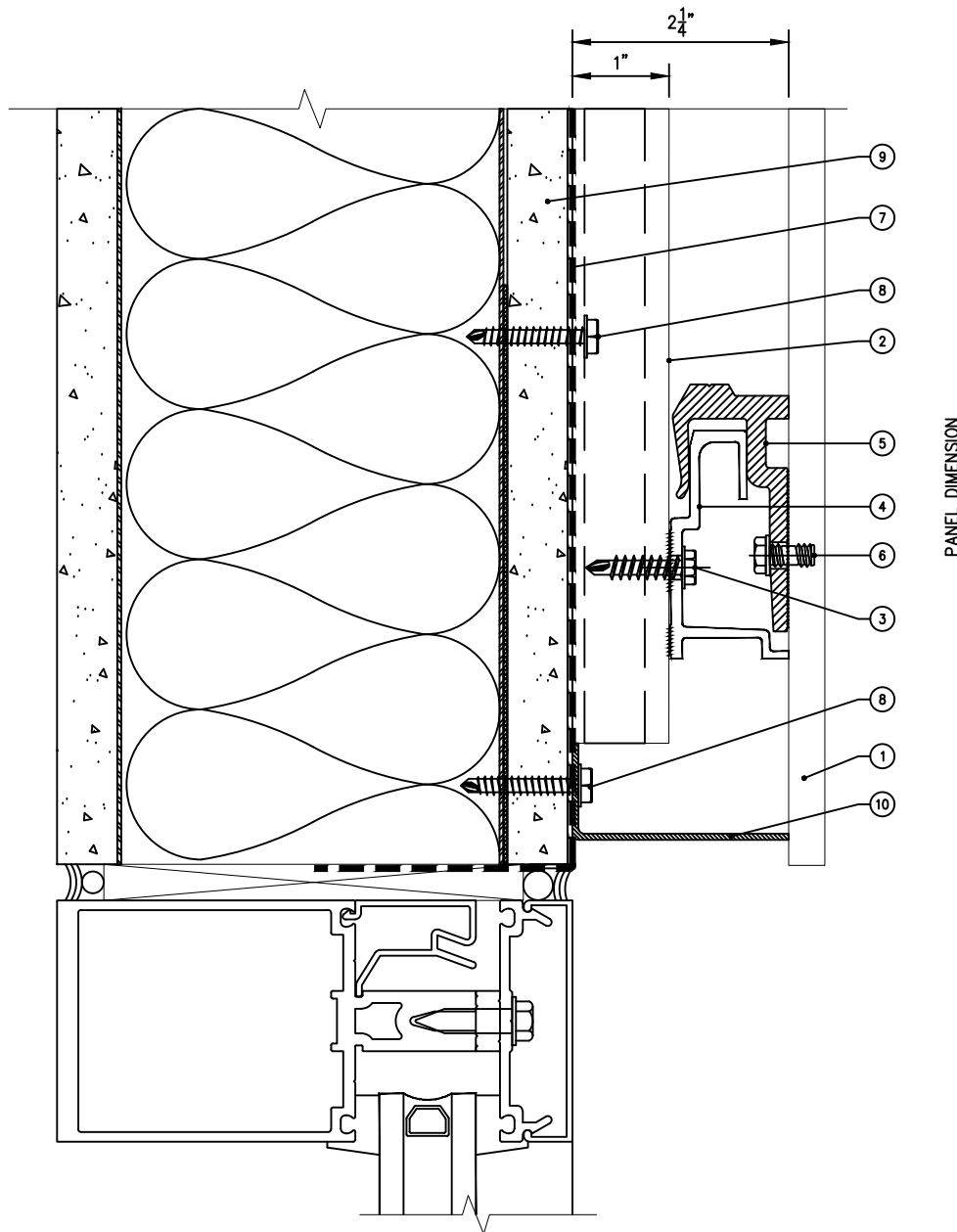
THE INFORMATION CONTAINED IN THIS DRAWING IS THE SOLE PROPERTY OF MONARCH METAL FABRICATION. ANY REPRODUCTION IN PART OR AS A WHOLE WITHOUT THE WRITTEN PERMISSION OF MONARCH METAL FABRICATION IS PROHIBITED.

| | |
|--------|----------|
| MAT'L | ALUMINUM |
| GAUGE | -- |
| FINISH | -- |

| | | |
|---------|------|---------|
| | NAME | DATE |
| DRAWN | KP | 10/2/20 |
| CHECKED | BB | --- |



| | | |
|---|------------------|----------------|
| TITLE: HPL VERTICAL CONCEALED W/O THERMAL ISOLATION | | |
| SIZE | DWG. NO. | REV. |
| A4 | DOOR HEAD | -- |
| SCALE: 1:2 | WEIGHT: ~ -- LBS | SHEET: 7 OF 13 |



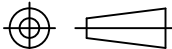
| NO. | DESCRIPTION |
|-----|-----------------------------|
| 1 | PANEL (BY OTHERS) |
| 2 | J-CHANNEL |
| 3 | RAIL FASTENER |
| 4 | RAIL |
| 5 | FIXED BRACKET |
| 6 | CLIP ANCHOR |
| 7 | WEATHER BARRIER (BY OTHERS) |
| 8 | ANCHORING FASTENER |
| 9 | SHEATHING (BY OTHERS) |
| 10 | SYSTEM CLOSURE |
| -- | -- |
| -- | -- |
| -- | -- |
| -- | -- |
| -- | -- |
| -- | -- |
| -- | -- |

ALL CONCEALED FASTENER LOCATIONS TO BE DETERMINED BY PANEL MANUFACTURER RECOMMENDATIONS

SHIMMING SHALL BE IN ACCORDANCE WITH GENERALLY ACCEPTED CURTAIN WALL STANDARDS 1/4" : 20'

PROPRIETARY AND CONFIDENTIAL

THE INFORMATION CONTAINED IN THIS DRAWING IS THE SOLE PROPERTY OF MONARCH METAL FABRICATION. ANY REPRODUCTION IN PART OR AS A WHOLE WITHOUT THE WRITTEN PERMISSION OF MONARCH METAL FABRICATION IS PROHIBITED.

MAT'L  ALUMINUM

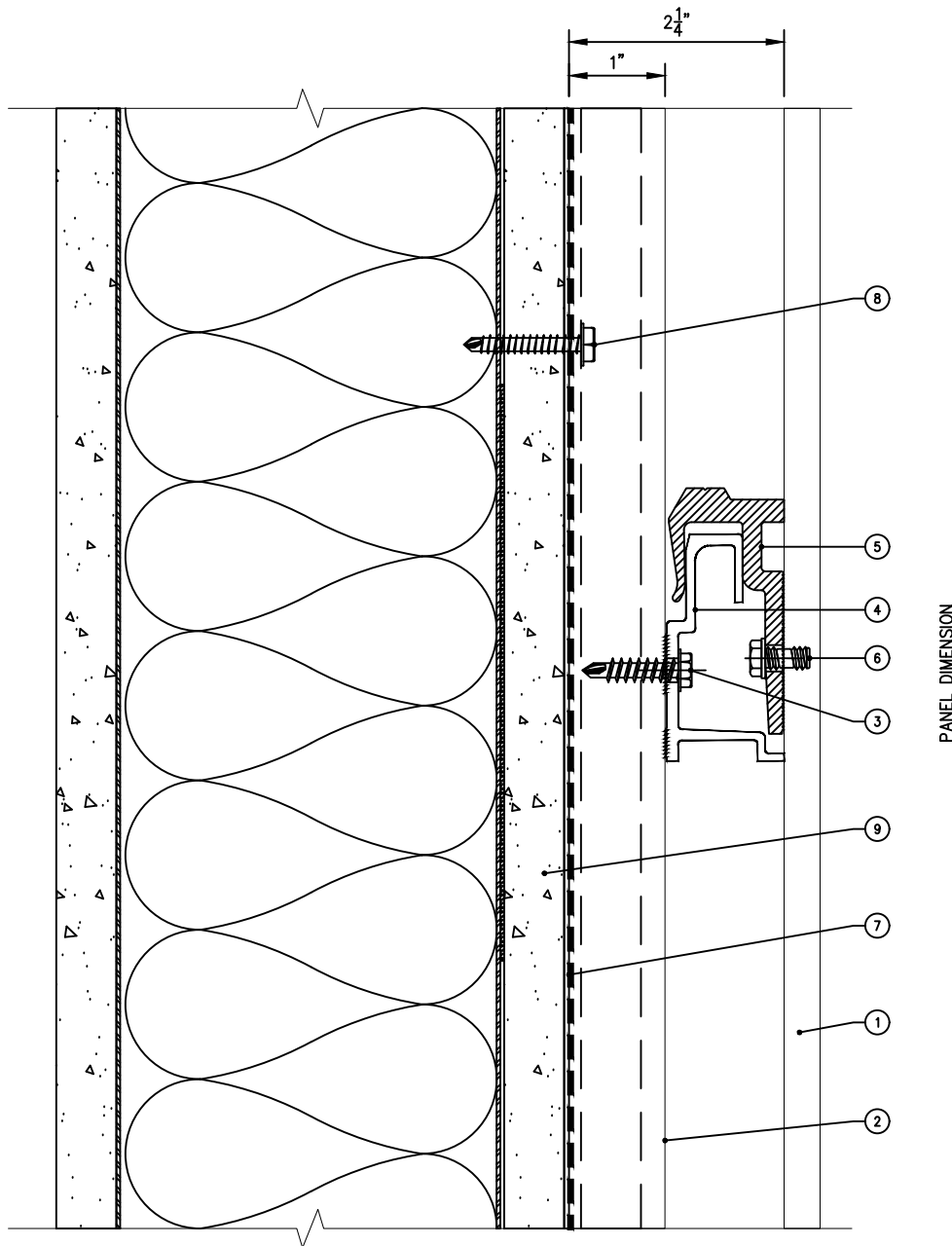
GAUGE --

FINISH --

| | | |
|---------|------|---------|
| | NAME | DATE |
| DRAWN | KP | 10/2/20 |
| CHECKED | BB | --- |



| | | |
|---|----------------------|----------------|
| TITLE: HPL VERTICAL CONCEALED W/O THERMAL ISOLATION | | |
| SIZE: A4 | DWG. NO. WINDOW HEAD | REV. -- |
| SCALE: 1:2 | WEIGHT: ~ -- LBS | SHEET: 8 OF 13 |



| NO. | DESCRIPTION |
|-----|-----------------------------|
| 1 | PANEL (BY OTHERS) |
| 2 | J-CHANNEL |
| 3 | RAIL FASTENER |
| 4 | RAIL |
| 5 | FIXED BRACKET |
| 6 | CLIP ANCHOR |
| 7 | WEATHER BARRIER (BY OTHERS) |
| 8 | ANCHORING FASTENER |
| 9 | SHEATHING (BY OTHERS) |
| -- | -- |
| -- | -- |
| -- | -- |
| -- | -- |
| -- | -- |
| -- | -- |
| -- | -- |
| -- | -- |

ALL CONCEALED FASTENER LOCATIONS TO BE DETERMINED BY PANEL MANUFACTURER RECOMMENDATIONS

SHIMMING SHALL BE IN ACCORDANCE WITH GENERALLY ACCEPTED CURTAIN WALL STANDARDS 1/4" : 20'

PROPRIETARY AND CONFIDENTIAL

THE INFORMATION CONTAINED IN THIS DRAWING IS THE SOLE PROPERTY OF MONARCH METAL FABRICATION. ANY REPRODUCTION IN PART OR AS A WHOLE WITHOUT THE WRITTEN PERMISSION OF MONARCH METAL FABRICATION IS PROHIBITED.

MAT'L ALUMINUM

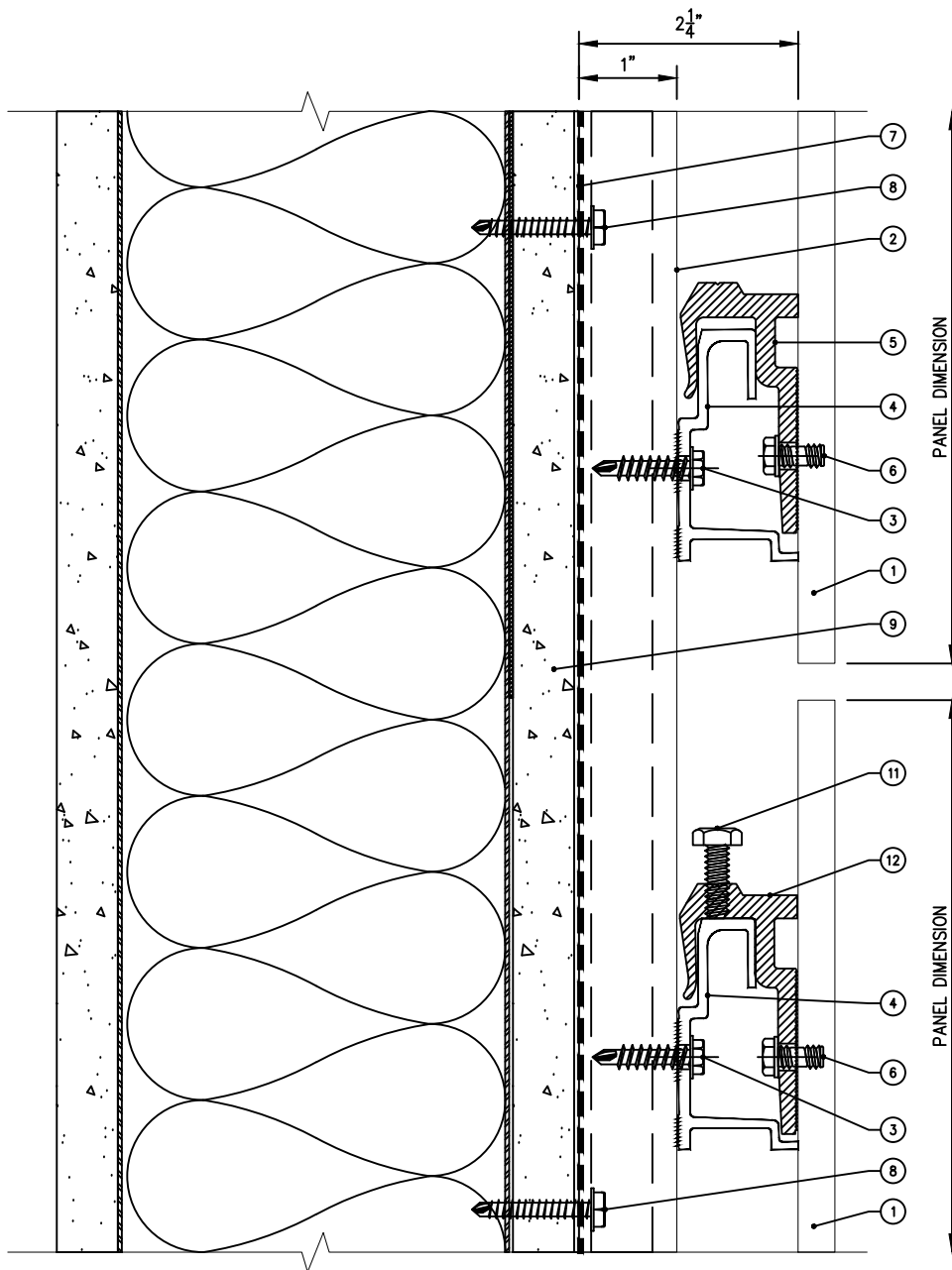
GAUGE --

FINISH --

| | | |
|---------|------|---------|
| | NAME | DATE |
| DRAWN | KP | 10/2/20 |
| CHECKED | BB | --- |



| | | |
|---|-------------------------------|----------------|
| TITLE: HPL VERTICAL CONCEALED W/O THERMAL ISOLATION | | |
| SIZE: A4 | DWG. NO. HORIZONTAL MID PANEL | REV. -- |
| SCALE: 1:2 | WEIGHT: ≈ -- LBS | SHEET: 9 OF 13 |



| NO. | DESCRIPTION |
|-----|-----------------------------|
| 1 | PANEL (BY OTHERS) |
| 2 | J-CHANNEL |
| 3 | RAIL FASTENER |
| 4 | RAIL |
| 5 | FIXED BRACKET |
| 6 | CLIP ANCHOR |
| 7 | WEATHER BARRIER (BY OTHERS) |
| 8 | ANCHORING FASTENER |
| 9 | SHEATHING (BY OTHERS) |
| 10 | SYSTEM CLOSURE |
| 11 | ADJUSTMENT SCREW |
| 12 | ADJUSTABLE BRACKET |
| -- | -- |
| -- | -- |
| -- | -- |
| -- | -- |
| -- | -- |

ALL CONCEALED FASTENER LOCATIONS TO BE DETERMINED BY PANEL MANUFACTURER RECOMMENDATIONS

SHIMMING SHALL BE IN ACCORDANCE WITH GENERALLY ACCEPTED CURTAIN WALL STANDARDS 1/4" : 20'

PROPRIETARY AND CONFIDENTIAL

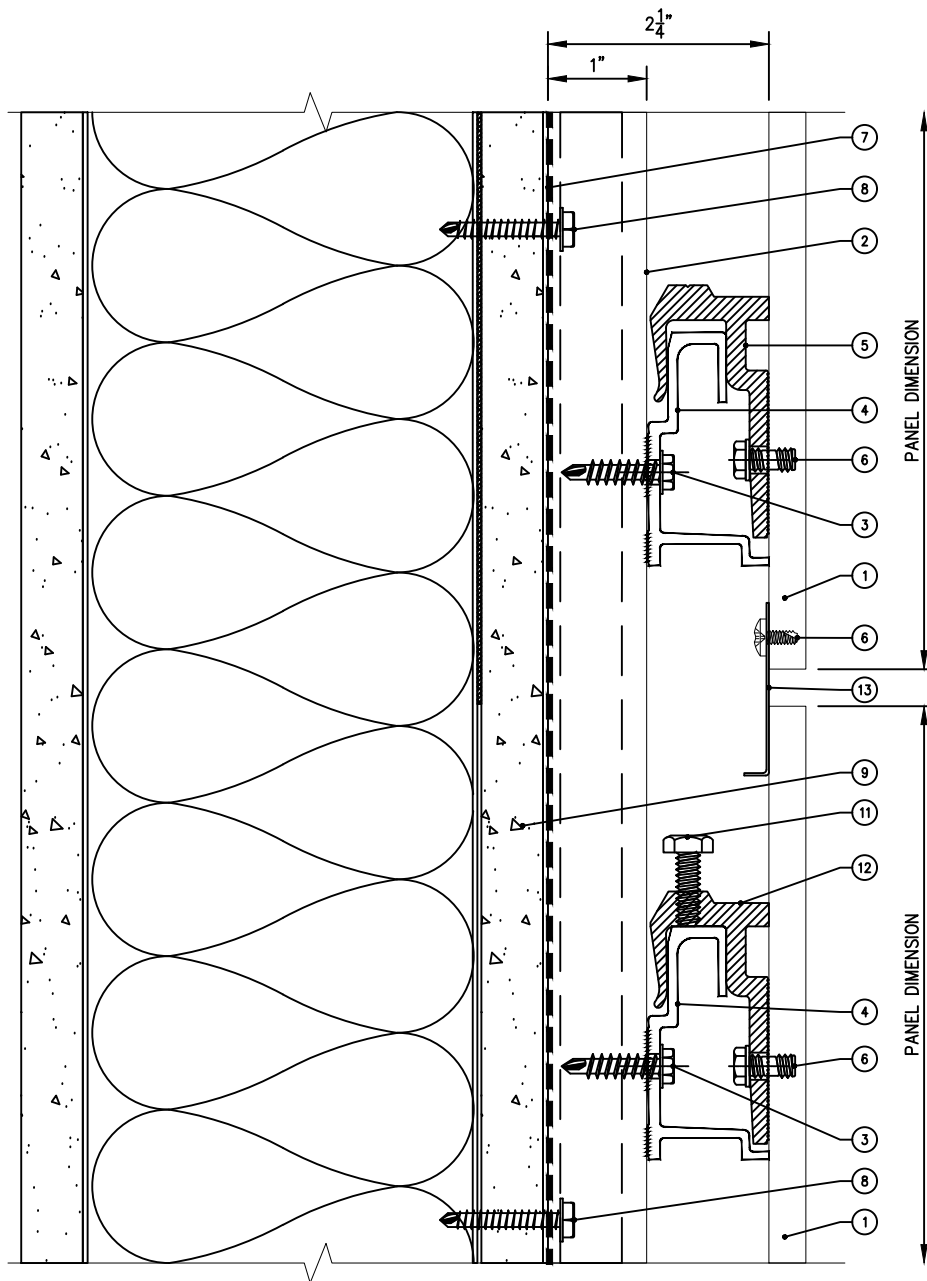
THE INFORMATION CONTAINED IN THIS DRAWING IS THE SOLE PROPERTY OF MONARCH METAL FABRICATION. ANY REPRODUCTION IN PART OR AS A WHOLE WITHOUT THE WRITTEN PERMISSION OF MONARCH METAL FABRICATION IS PROHIBITED.

| | |
|--------|----------|
| MAT'L | ALUMINUM |
| GAUGE | -- |
| FINISH | -- |

| | | |
|---------|------|---------|
| | NAME | DATE |
| DRAWN | KP | 10/2/20 |
| CHECKED | BB | --- |



| | | |
|---|---------------------------------|----------------|
| TITLE: HPL VERTICAL CONCEALED W/O THERMAL ISOLATION | | |
| SIZE: A4 | DWG. NO. HORIZONTAL PANEL JOINT | REV. -- |
| SCALE: 1:2 | WEIGHT: ~ -- LBS | SHEET 10 OF 13 |



| NO. | DESCRIPTION |
|-----|-----------------------------|
| 1 | PANEL (BY OTHERS) |
| 2 | J-CHANNEL |
| 3 | RAIL FASTENER |
| 4 | RAIL |
| 5 | FIXED BRACKET |
| 6 | CLIP ANCHOR |
| 7 | WEATHER BARRIER (BY OTHERS) |
| 8 | ANCHORING FASTENER |
| 9 | SHEATHING (BY OTHERS) |
| 10 | SYSTEM CLOSURE |
| 11 | ADJUSTMENT SCREW |
| 12 | ADJUSTABLE BRACKET |
| 13 | JOINT CLOSURE |
| -- | -- |
| -- | -- |
| -- | -- |
| -- | -- |

ALL CONCEALED FASTENER LOCATIONS TO BE DETERMINED BY PANEL MANUFACTURER RECOMMENDATIONS

SHIMMING SHALL BE IN ACCORDANCE WITH GENERALLY ACCEPTED CURTAIN WALL STANDARDS 1/4" : 20'

PROPRIETARY AND CONFIDENTIAL

THE INFORMATION CONTAINED IN THIS DRAWING IS THE SOLE PROPERTY OF MONARCH METAL FABRICATION. ANY REPRODUCTION IN PART OR AS A WHOLE WITHOUT THE WRITTEN PERMISSION OF MONARCH METAL FABRICATION IS PROHIBITED.

MAT'L ALUMINUM

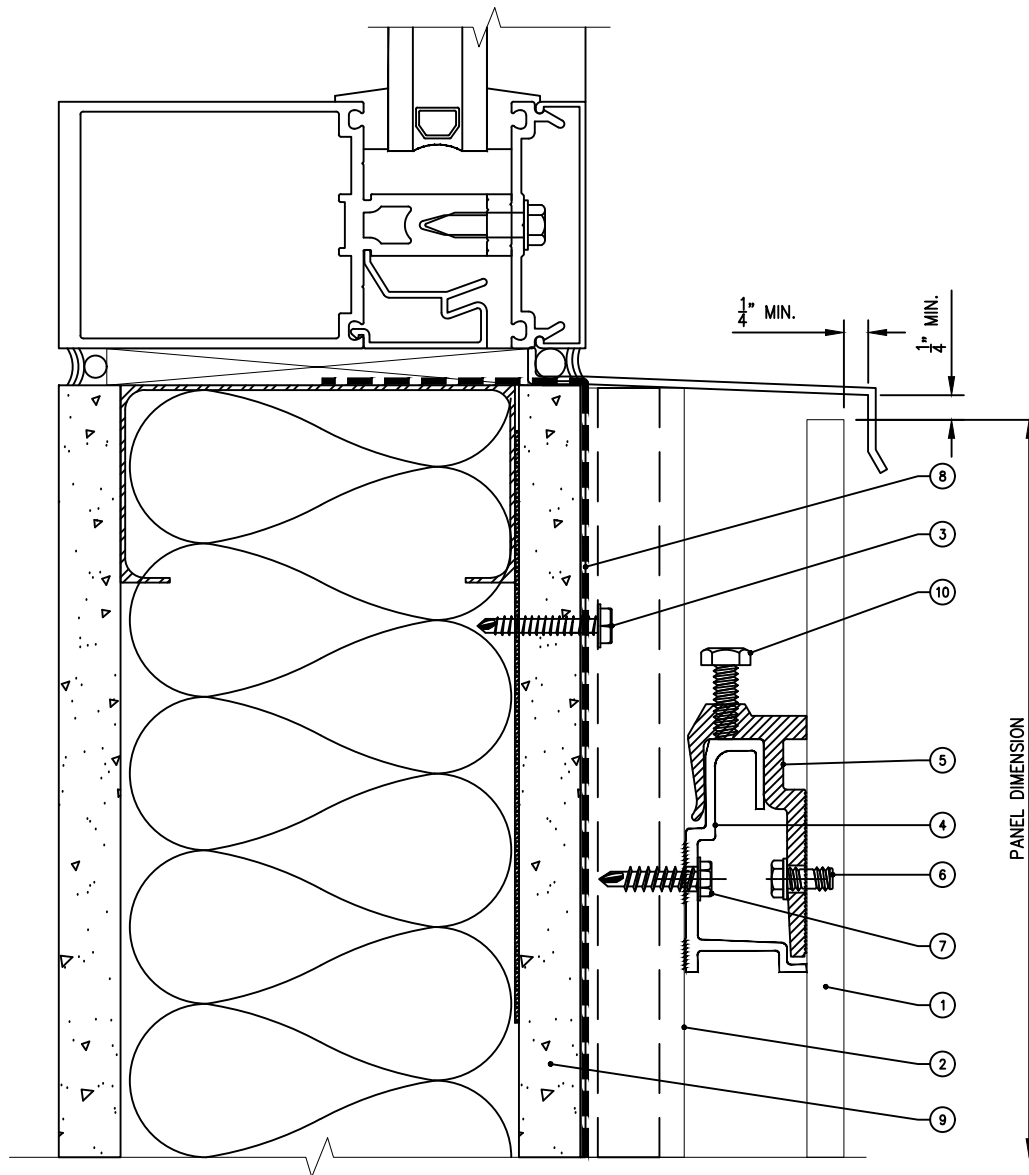
GAUGE --

FINISH --

| | | |
|---------|------|---------|
| | NAME | DATE |
| DRAWN | KP | 10/2/20 |
| CHECKED | BB | --- |

MONARCH
METAL FABRICATION

| | | |
|---|---------------------------------|-----------------|
| TITLE: HPL VERTICAL CONCEALED W/O THERMAL ISOLATION | | |
| SIZE: A4 | DWG. NO. HORIZONTAL PANEL JOINT | REV. -- |
| SCALE: 1:2 | WEIGHT: ~ -- LBS | SHEET 10a OF 13 |



| NO. | DESCRIPTION |
|-----|-----------------------------|
| 1 | PANEL (BY OTHERS) |
| 2 | J-CHANNEL |
| 3 | ANCHORING FASTENER |
| 4 | RAIL |
| 5 | ADJUSTABLE BRACKET |
| 6 | CLIP ANCHOR |
| 7 | RAIL FASTENER |
| 8 | WEATHER BARRIER (BY OTHERS) |
| 9 | SHEATHING (BY OTHERS) |
| 10 | ADJUSTMENT SCREW |
| -- | -- |
| -- | -- |
| -- | -- |
| -- | -- |
| -- | -- |
| -- | -- |
| -- | -- |

ALL CONCEALED FASTENER LOCATIONS TO BE DETERMINED BY PANEL MANUFACTURER RECOMMENDATIONS

SHIMMING SHALL BE IN ACCORDANCE WITH GENERALLY ACCEPTED CURTAIN WALL STANDARDS 1/4" : 20'

PROPRIETARY AND CONFIDENTIAL

THE INFORMATION CONTAINED IN THIS DRAWING IS THE SOLE PROPERTY OF MONARCH METAL FABRICATION. ANY REPRODUCTION IN PART OR AS A WHOLE WITHOUT THE WRITTEN PERMISSION OF MONARCH METAL FABRICATION IS PROHIBITED.

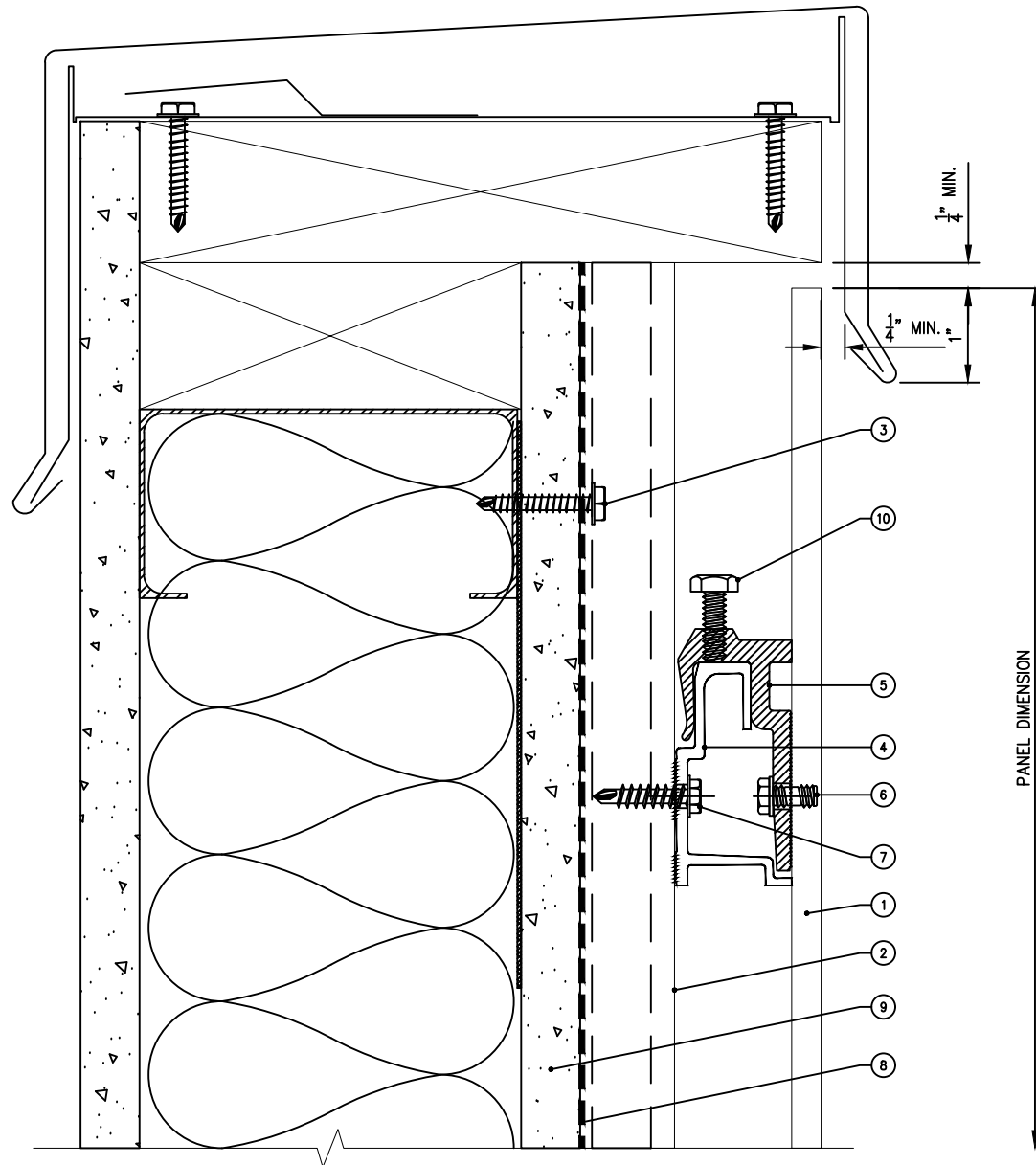
| | |
|--------|----------|
| MAT'L | ALUMINUM |
| GAUGE | -- |
| FINISH | -- |

| | | |
|---------|------|---------|
| | NAME | DATE |
| DRAWN | KP | 10/2/20 |
| CHECKED | BB | --- |



| | | |
|---|------------------|----------------|
| TITLE: HPL VERTICAL CONCEALED W/O THERMAL ISOLATION | | |
| SIZE | DWG. NO. | REV. |
| A4 | WINDOW SILL | -- |
| SCALE: 1:2 | WEIGHT: ~ -- LBS | SHEET 11 OF 13 |

| NO. | DESCRIPTION |
|-----|-----------------------------|
| 1 | PANEL (BY OTHERS) |
| 2 | J-CHANNEL |
| 3 | ANCHORING FASTENER |
| 4 | RAIL |
| 5 | ADJUSTABLE BRACKET |
| 6 | CLIP ANCHOR |
| 7 | RAIL FASTENER |
| 8 | WEATHER BARRIER (BY OTHERS) |
| 9 | SHEATHING (BY OTHERS) |
| 10 | ADJUSTMENT SCREW |
| -- | -- |
| -- | -- |
| -- | -- |
| -- | -- |
| -- | -- |
| -- | -- |
| -- | -- |



ALL CONCEALED FASTENER LOCATIONS TO BE DETERMINED BY PANEL MANUFACTURER RECOMMENDATIONS

SHIMMING SHALL BE IN ACCORDANCE WITH GENERALLY ACCEPTED CURTAIN WALL STANDARDS 1/4" : 20'

PROPRIETARY AND CONFIDENTIAL

THE INFORMATION CONTAINED IN THIS DRAWING IS THE SOLE PROPERTY OF MONARCH METAL FABRICATION. ANY REPRODUCTION IN PART OR AS A WHOLE WITHOUT THE WRITTEN PERMISSION OF MONARCH METAL FABRICATION IS PROHIBITED.

MAT'L ALUMINUM

GAUGE --

FINISH --

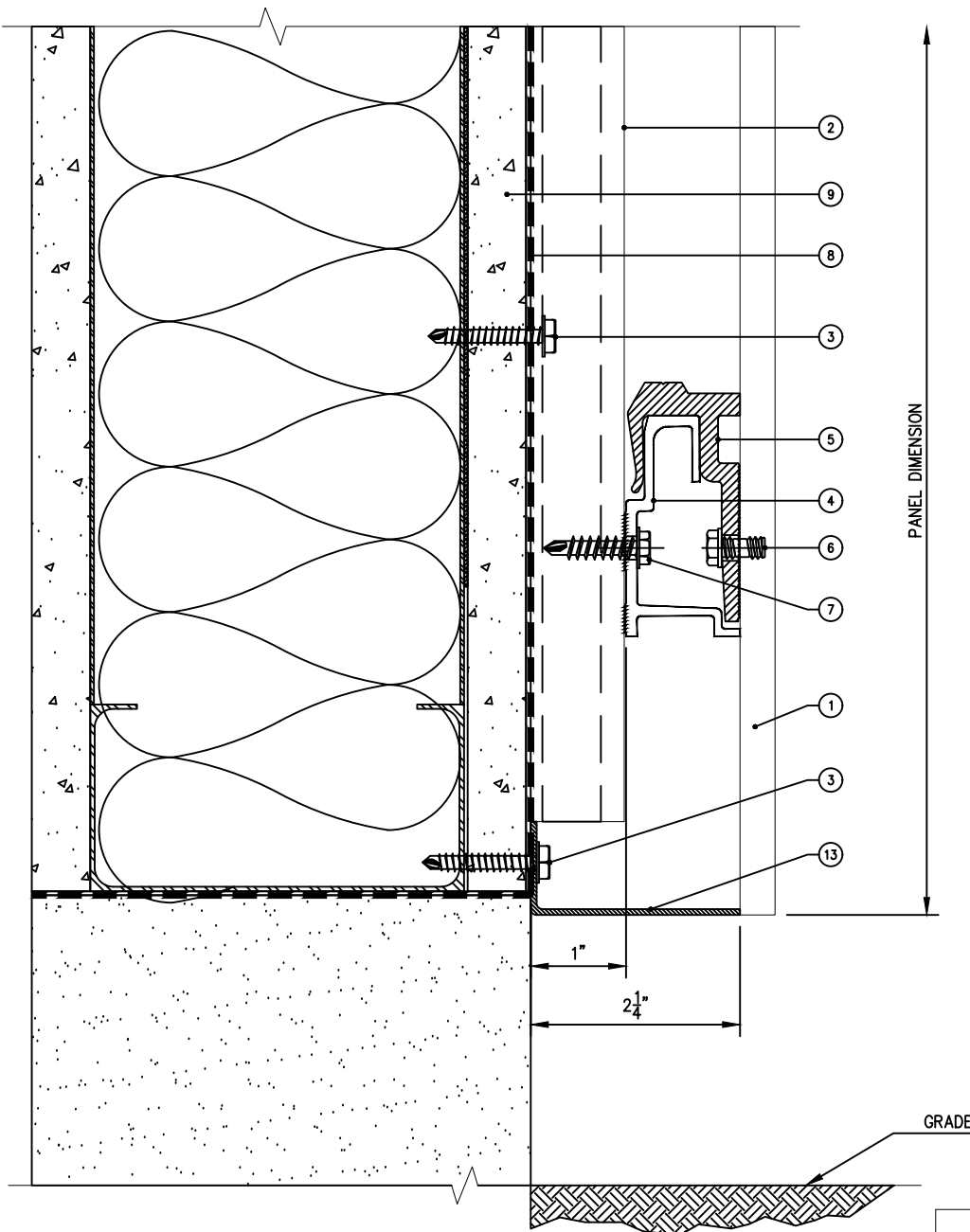
| | |
|------|---------|
| NAME | DATE |
| KP | 10/2/20 |
| BB | --- |

DRAWN

CHECKED

MONARCH
METAL FABRICATION

| | | |
|---|----------------------|----------------|
| TITLE: HPL VERTICAL CONCEALED W/O THERMAL ISOLATION | | |
| SIZE: A4 | DWG. NO. PARAPET CAP | REV. -- |
| SCALE: 1:2 | WEIGHT: ~ -- LBS | SHEET 12 OF 13 |



| NO. | DESCRIPTION |
|-----|-----------------------------|
| 1 | PANEL (BY OTHERS) |
| 2 | J-CHANNEL |
| 3 | ANCHORING FASTENER |
| 4 | RAIL |
| 5 | FIXED BRACKET |
| 6 | CLIP ANCHOR |
| 7 | RAIL FASTENER |
| 8 | WEATHER BARRIER (BY OTHERS) |
| 9 | SHEATHING (BY OTHERS) |
| 10 | SYSTEM CLOSURE |
| -- | -- |
| -- | -- |
| -- | -- |
| -- | -- |
| -- | -- |
| -- | -- |
| -- | -- |

ALL CONCEALED FASTENER LOCATIONS TO BE DETERMINED BY PANEL MANUFACTURER RECOMMENDATIONS

SHIMMING SHALL BE IN ACCORDANCE WITH GENERALLY ACCEPTED CURTAIN WALL STANDARDS 1/4" : 20'

PROPRIETARY AND CONFIDENTIAL

THE INFORMATION CONTAINED IN THIS DRAWING IS THE SOLE PROPERTY OF MONARCH METAL FABRICATION. ANY REPRODUCTION IN PART OR AS A WHOLE WITHOUT THE WRITTEN PERMISSION OF MONARCH METAL FABRICATION IS PROHIBITED.

| | |
|--------|----------|
| MAT'L | ALUMINUM |
| GAUGE | -- |
| FINISH | -- |

| | | |
|---------|------|---------|
| | NAME | DATE |
| DRAWN | KP | 10/2/20 |
| CHECKED | BB | --- |



| | | |
|---|------------------|----------------|
| TITLE: HPL VERTICAL CONCEALED W/O THERMAL ISOLATION | | |
| SIZE | DWG. NO. | REV. |
| A4 | FLOOR BASE PANEL | -- |
| SCALE: 1:2 | WEIGHT: ~ -- LBS | SHEET 13 OF 13 |